

SHIPBUILDING STATISTICS

SEPTEMBER, 2011



CONTENTS : SHIPBUILDING STATISTICS (SEP. 2011)

<p>1. World New Orders 1</p> <p>Fig 1. World New Orders 2</p> <p>2. World Completions 3</p> <p>Fig 2. World Completions 4</p> <p>3. World Completions by Ship Type 5</p> <p>Fig 3. Ship Type Share of World Completions 6</p> <p>4. World Orderbook at Year-End 7</p> <p>Fig 4. World Orderbook at Year-End 8</p> <p>5. World Merchant Fleets by Registration 9</p> <p>Fig 5. Merchant Fleets Share (%) By Registration & By Nationality of Owner 10</p> <p>6. World Merchant Fleets by Ship Type 11</p> <p>Fig 6. World Merchant Fleets by Ship Type 12</p> <p>7. World Merchant Fleets' Age Profile by Ship Type 13</p> <p>Fig 7. World Merchant Fleets' Age Profile by Ship Type 14</p> <p>8. World "Total Losses" and "Disposals" 15</p> <p>Fig 8. World "Total Losses" and "Disposals" 16</p> <p>9. World Disposals by Country of Breaking 17</p> <p>Fig 9. World Disposals by Country of Breaking 18</p>	<p>10. World Laid Up Vessels 19</p> <p>Fig 10. World Laid Up Vessels 20</p> <p>11. World Seaborne Trade 21</p> <p>Fig 11. World Seaborne Trade 22</p> <p>12. Newbuilding / Repair Sales (SAJ Members Only) 23</p> <p>Fig 12. Newbuilding / Repair Sales (SAJ Members Only) 24</p> <p>13. Ordinary Steel Consumption by Shipbuilding Industry 25</p> <p>Fig 13. Ordinary Steel Consumption by Shipbuilding Industry 26</p> <p>14. Repair / Conversion Turnover 27</p> <p>Fig 14. Repair / Conversion Turnover 28</p> <p>15. Shipbuilding Workforce (SAJ Members) 29</p> <p>Fig 15. Shipbuilding Workforce (SAJ Members) 30</p> <p>Annex 1. Orderbook by Shipowner's nationality (Japan - Korea - China) As of 30 Jun. 2011 31</p> <p>Annex 2. Orderbook by shiptype (Japan - Korea - China) As of 30 Jun. 2011 32</p> <p>Annex 3. Actual Delivery & Estimated Delivery by Ship-types As of end Jun. 2011 33-34</p>
--	---

1. WORLD NEW ORDERS

Year Country	2005			2006			2007			2008			2009			2010			2011 1st Half		
	No.	'000GT	share(%)	No.	'000GT	share(%)	No.	'000GT	share(%)	No.	'000GT	share(%)	No.	'000GT	share(%)	No.	'000GT	share(%)	No.	'000GT	share(%)
Japan	536	16,502	27.5	653	22,557	22.6	616	20,413	12.0	531	14,733	16.7	300	8,509	25.3	427	11,921	14.5	125	3,856	12.1
S. Korea	450	21,609	36.0	699	38,109	38.3	1,201	67,893	40.0	555	34,643	39.4	150	8,522	25.4	473	27,912	33.9	231	18,052	56.4
China	517	10,621	17.7	1,106	27,352	27.5	1,970	61,342	36.2	1,067	29,112	33.1	487	14,947	44.5	1,043	36,118	43.8	253	7,145	22.3
Belgium	0	0	0.0	0	0	0.0	0	0	0.0	0	0	0.0	0	0	0.0	0	0	0.0	0	0	0.0
Denmark	6	594	1.0	1	0	0.0	17	720	0.4	4	238	0.3	1	0	0.0	1	0	0.0	0	0	0.0
France	5	262	0.4	12	395	0.4	9	104	0.1	4	189	0.2	5	5	0.0	8	282	0.3	2	35	0.1
Germany	144	2,669	4.4	74	1,432	1.4	72	1,271	0.7	33	542	0.6	9	8	0.0	22	547	0.7	9	231	0.7
Greece	0	0	0.0	0	0	0.0	0	0	0.0	1	8	0.0	4	3	0.0	0	0	0.0	3	3	0.0
Italy	39	1,058	1.8	31	354	0.4	43	997	0.6	9	539	0.6	5	359	1.1	9	566	0.7	2	8	0.0
Netherlands	126	305	0.5	126	344	0.3	35	165	0.1	35	167	0.2	10	57	0.2	9	22	0.0	13	24	0.1
U.K.	4	1	0.0	2	1	0.0	0	0	0.0	1	0	0.0	2	0	0.0	1	0	0.0	1	0	0.0
Finland	9	465	0.8	4	495	0.5	2	46	0.0	4	98	0.1	1	12	0.0	3	71	0.1	3	6	0.0
Norway	28	118	0.2	80	283	0.3	48	266	0.2	13	45	0.1	14	30	0.1	13	62	0.1	11	51	0.2
Sweden	0	0	0.0	1	10	0.0	0	0	0.0	2	24	0.0	0	0	0.0	0	0	0.0	0	0	0.0
Spain	66	367	0.6	86	412	0.4	70	294	0.2	45	199	0.2	14	45	0.1	24	34	0.0	4	44	0.1
Portugal	4	29	0.0	4	32	0.0	2	0	0.0	0	0	0.0	0	0	0.0	0	0	0.0	0	0	0.0
Europe total	431	5,868	9.8	421	3,757	3.8	298	3,863	2.3	151	2,050	2.3	65	521	1.6	90	1,584	1.9	48	403	1.3
Brazil	8	24	0.0	8	100	0.1	17	504	0.3	50	577	0.7	24	42	0.1	22	92	0.1	5	17	0.1
Poland	59	615	1.0	49	631	0.6	64	202	0.1	36	36	0.0	13	6	0.0	13	83	0.1	8	26	0.1
Singapore	64	120	0.2	46	90	0.1	31	88	0.1	21	121	0.1	12	15	0.0	3	40	0.0	8	49	0.2
Taiwan	18	453	0.8	20	832	0.8	31	1,226	0.7	6	239	0.3	12	264	0.8	8	246	0.3	10	1,027	3.2
U.S.A.	48	346	0.6	94	384	0.4	46	97	0.1	28	24	0.0	23	27	0.1	45	70	0.1	11	58	0.2
Croatia	9	361	0.6	14	275	0.3	27	580	0.3	8	172	0.2	1	24	0.1	6	141	0.2	6	83	0.3
Others	556	3,481	5.8	718	5,513	5.5	1,103	13,392	7.9	807	6,293	7.2	321	723	2.2	650	4,193	5.1	198	1,276	4.0
Sub total	762	5,400	9.0	949	7,825	7.9	1,319	16,089	9.5	956	7,462	8.5	406	1,101	3.3	747	4,865	5.9	246	2,537	7.9
World Total	2,696	60,000	100.0	3,828	99,600	100.0	5,404	169,600	100.0	3,260	88,000	100.0	1,408	33,600	100.0	2,780	82,400	100.0	903	31,992	100.0

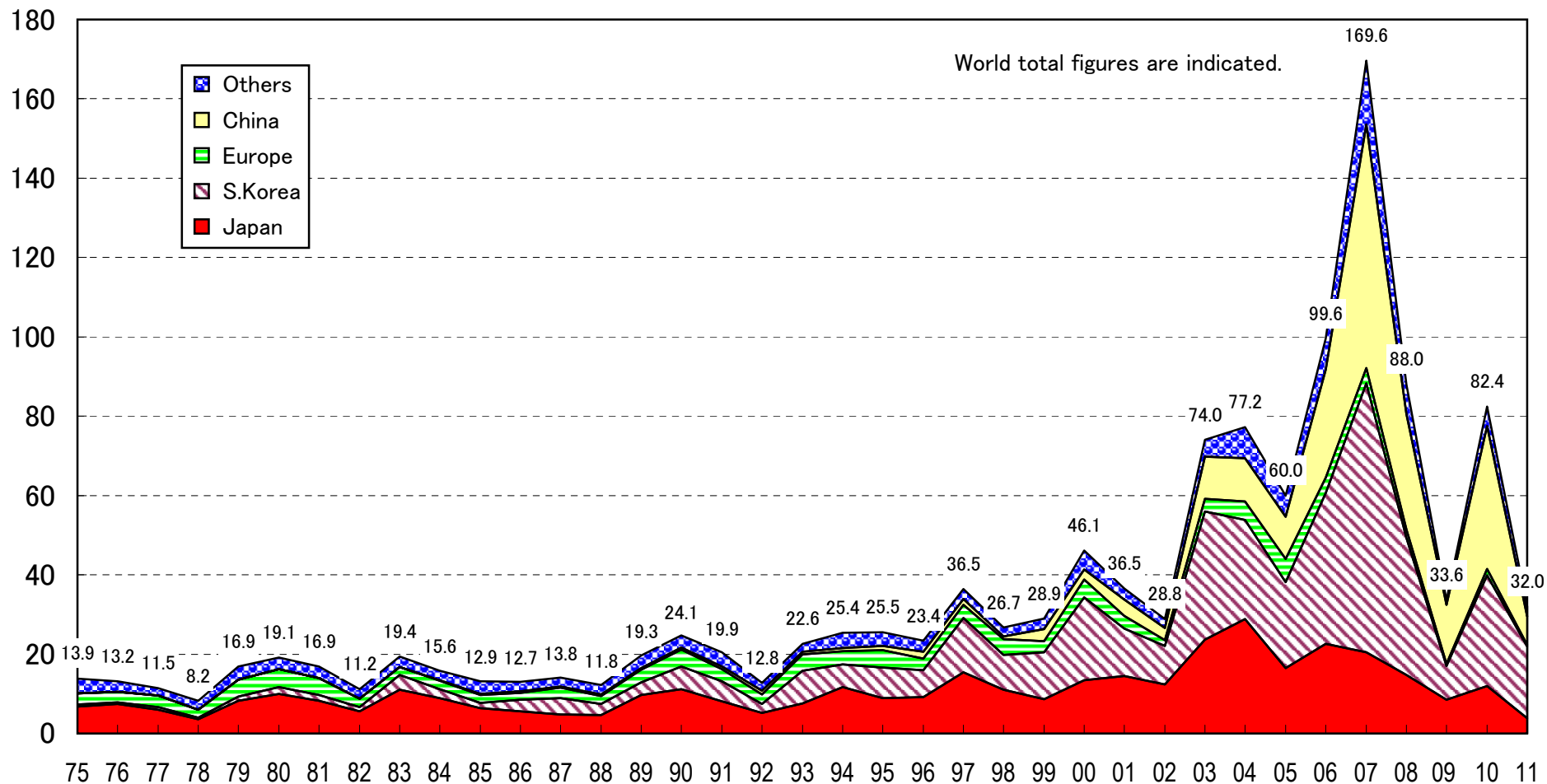
(Note) 1. Data Source : IHS (Former Lloyd's Register) "World Shipbuilding Statistics".

2. Ship Size Coverage : 100 Gross Tonnage and over.

3. Europe total = Former AWES (present CESA) countries. Excludes Poland (member from '95) , Rumania ('00), Croatia ('02), Lithuania & Bulgaria ('09) for comparisons with former periods.

Fig 1. WORLD NEW ORDERS
(1975~2011 1st Half)

Million GT



(Note) 1. Data Source : JSEA report based on LR until 1994. IHS (Former Lloyd's Register) "World Shipbuilding Statistics" from 1995.
2. Ship Size Coverage : 100 Gross Tonnage and over.

2. WORLD COMPLETIONS

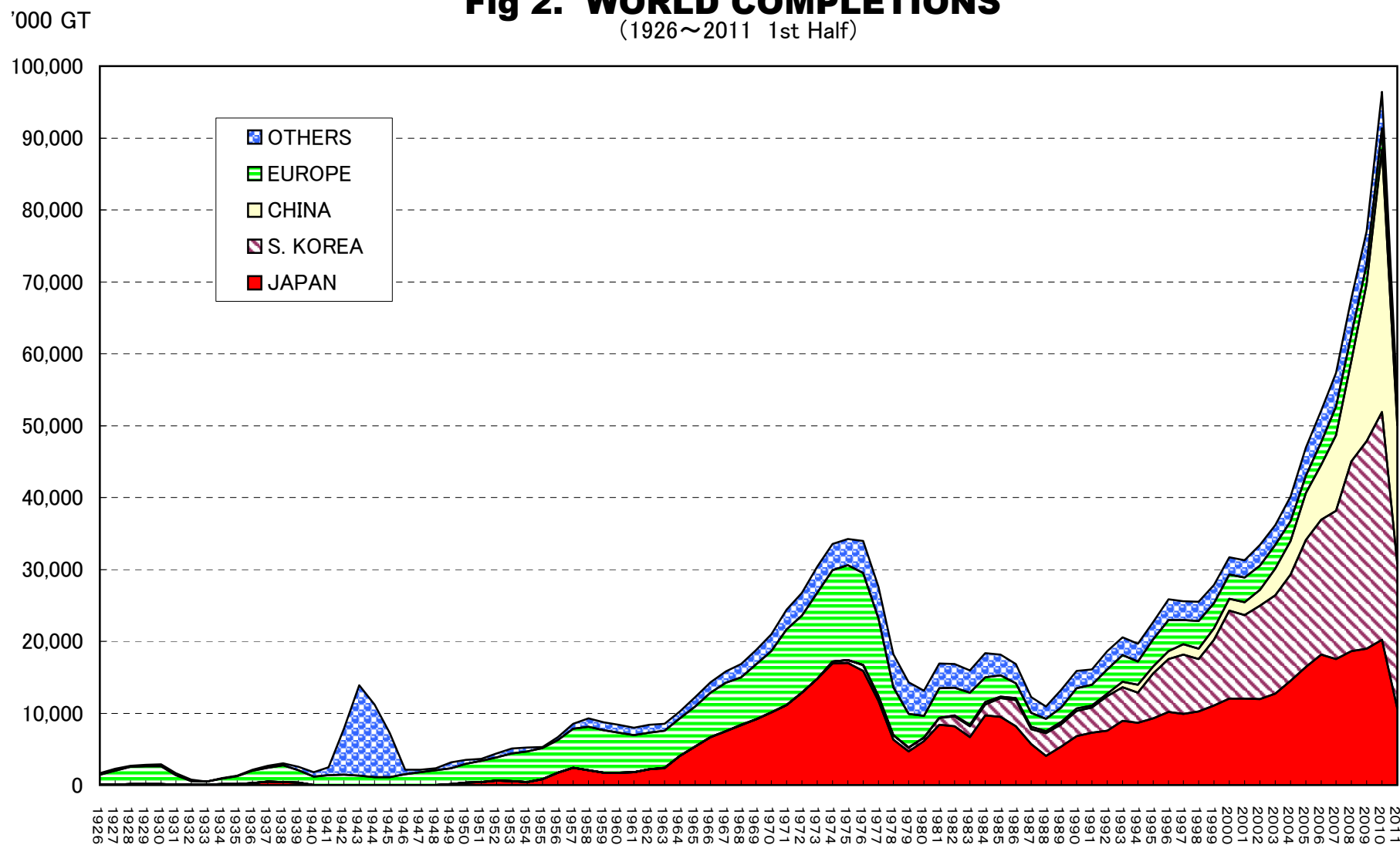
Year Country	2005			2006			2007			2008			2009			2010			2011 1st Half		
	No.	'000GT	share(%)	No.	'000GT	share(%)	No.	'000GT	share(%)	No.	'000GT	share(%)	No.	'000GT	share(%)	No.	'000GT	share(%)	No.	'000GT	share(%)
Japan	469	16,434	35.0	534	18,176	34.9	543	17,525	30.6	562	18,656	27.6	576	18,972	24.6	580	20,218	21.0	309	10,678	19.9
S. Korea	326	17,689	37.7	377	18,717	35.9	430	20,593	35.9	520	26,379	39.0	524	28,849	37.4	526	31,698	32.9	305	20,113	37.5
China	420	6,466	13.8	493	7,665	14.7	661	10,553	18.4	861	13,956	20.6	1086	21,969	28.5	1413	36,437	37.8	648	19,274	35.9
Belgium	0	0	0.0	0	0	0.0	1	3	0.0	0	0	0.0	0	0	0.0	0	0	0.0	0	0	0.0
Denmark	7	493	1.0	5	538	1.0	6	855	1.5	7	566	0.8	8	449	0.6	8	432	0.4	2	59	0.1
France	8	42	0.1	6	241	0.5	8	191	0.3	4	232	0.3	8	146	0.2	8	258	0.3	0	0	0.0
Germany	67	1,236	2.6	59	1,257	2.4	70	1,362	2.4	70	1,350	2.0	50	781	1.0	36	932	1.0	9	211	0.4
Greece	1	8	0.0	1	2	0.0	1	16	0.0	3	2	0.0	8	11	0.0	7	4	0.0	4	4	0.0
Italy	18	356	0.8	22	519	1.0	26	716	1.2	24	700	1.0	22	554	0.7	34	634	0.7	9	260	0.5
Netherlands	72	170	0.4	91	187	0.4	56	194	0.3	43	140	0.2	33	138	0.2	29	138	0.1	14	120	0.2
U.K.	8	3	0.0	4	3	0.0	3	1	0.0	6	2	0.0	6	1	0.0	8	1	0.0	0	0	0.0
Finland	1	7	0.0	4	227	0.4	4	288	0.5	5	308	0.5	3	304	0.4	2	225	0.2	1	48	0.1
Norway	10	10	0.0	16	24	0.0	17	60	0.1	18	71	0.1	15	44	0.1	12	21	0.0	5	6	0.0
Sweden	0	0	0.0	0	0	0.0	2	8	0.0	2	19	0.0	1	9	0.0	1	13	0.0	0	0	0.0
Spain	77	94	0.2	43	99	0.2	70	233	0.4	64	210	0.3	52	217	0.3	56	288	0.3	23	156	0.3
Portugal	4	22	0.0	5	15	0.0	5	28	0.0	2	16	0.0	6	26	0.0	1	9	0.0	0	0	0.0
Europe total	273	2,440	5.2	256	3,112	6.0	269	3,956	6.9	248	3,616	5.3	212	2,680	3.5	202	2,955	3.1	67	863	1.6
Brazil	12	25	0.1	11	30	0.1	16	31	0.1	24	48	0.1	25	77	0.1	21	47	0.0	10	53	0.1
Poland	55	787	1.7	57	838	1.6	60	587	1.0	63	672	1.0	60	360	0.5	52	167	0.2	14	62	0.1
Singapore	45	68	0.1	47	156	0.3	43	88	0.2	59	157	0.2	34	47	0.1	41	119	0.1	18	19	0.0
Taiwan	19	629	1.3	21	672	1.3	16	671	1.2	18	622	0.9	18	476	0.6	21	580	0.6	8	333	0.6
U.S.A.	46	431	0.9	58	283	0.5	66	162	0.3	109	165	0.2	99	292	0.4	76	238	0.2	25	56	0.1
Croatia	24	546	1.2	25	569	1.1	25	709	1.2	27	617	0.9	16	412	0.5	16	387	0.4	8	218	0.4
Others	440	1,454	3.1	568	1,900	3.6	653	2,444	4.3	751	2,801	4.1	904	2,938	3.8	800	3,587	3.7	294	1,969	3.7
Sub total	641	3,940	8.4	787	4,448	8.5	879	4,693	8.2	1,051	5,083	7.5	1,156	4,602	6.0	1,027	5,125	5.3	377	2,710	5.1
World Total	2,129	46,970	100.0	2,447	52,118	100.0	2,782	57,320	100.0	3,242	67,690	100.0	3,554	77,073	100.0	3,748	96,433	100.0	1,706	53,639	100.0

(Note) 1. Data Source : IHS (Former Lloyd's Register) "World Fleet Statistics". 2011 "World Shipbuilding Statistics".

2. Ship Size Coverage : 100 Gross Tonnage and over.

3. Europe total = Former AWES (present CESA) countries. Excludes Poland (member from '95), Rumania ('00), Croatia ('02), Lithuania & Bulgaria ('09) for comparisons with former periods.

Fig 2. WORLD COMPLETIONS
(1926~2011 1st Half)



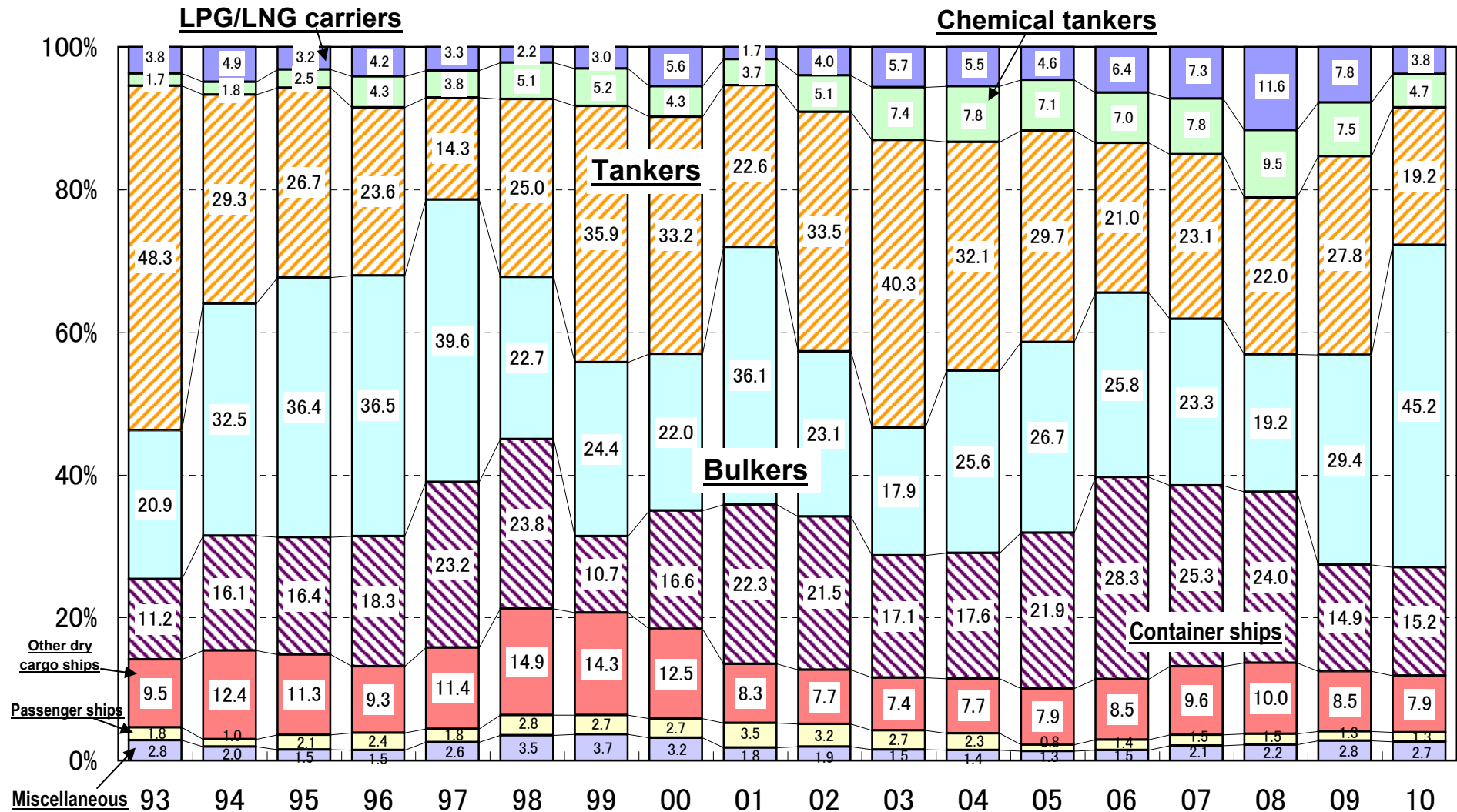
(Note) 1. Data Source : IHS (Former Lloyd's Register). Until 1967, launched base. After 1968, delivered base.
2. Ship Size Coverage : 100 GT and over.

3. WORLD COMPLETIONS BY SHIP TYPE

	1993		1994		1995		1996		1997		1998		1999		2000		2001		2002		2003		2004		2005		2006		2007		2008		2009		2010	
	No.	'000GT	No.	'000GT	No.	'000GT	No.	'000GT	No.	'000GT	No.	'000GT	No.	'000GT	No.	'000GT	No.	'000GT	No.	'000GT	No.	'000GT	No.	'000GT	No.	'000GT	No.	'000GT	No.	'000GT	No.	'000GT	No.	'000GT		
LPG/LNG	32	771	23	963	44	727	57	1,077	35	845	40	555	39	840	43	1,761	33	539	34	1,343	46	2,055	40	2,206	33	2,177	68	3,360	93	4,159	134	7,884	101	5,990	88	3,668
Chemical	98	347	78	349	64	565	105	1,116	94	967	126	1,305	113	1,460	100	1,354	84	1,154	116	1,703	177	2,662	191	3,137	213	3,328	253	3,666	322	4,460	461	6,404	419	5,808	324	4,529
Tanker	315	9,922	224	5,768	194	6,037	159	6,085	96	3,651	130	6,359	171	9,995	151	10,514	115	7,080	157	11,194	248	14,568	241	12,880	262	13,932	239	10,926	271	13,251	289	14,889	386	21,463	331	18,558
Bulker	127	4,285	208	6,393	262	8,243	279	9,439	303	10,104	204	5,780	182	6,784	184	6,962	314	11,304	224	7,725	165	6,466	257	10,264	313	12,537	310	13,465	317	13,375	342	13,013	537	22,693	985	43,549
Container	100	2,305	146	3,170	160	3,721	203	4,721	248	5,936	254	6,056	128	2,986	154	5,270	186	6,978	200	7,167	174	6,194	174	7,069	266	10,276	362	14,753	395	14,495	428	16,226	278	11,477	260	14,648
Dry cargo	490	1,953	515	2,443	539	2,550	498	2,407	452	2,910	404	3,793	366	3,989	370	3,968	254	2,589	218	2,555	203	2,659	262	3,103	378	3,697	436	4,429	521	5,512	562	6,751	524	6,523	569	7,663
Passenger	107	373	104	200	105	469	77	611	103	467	69	716	77	741	61	858	63	1,089	52	1,061	42	978	47	939	39	399	31	753	52	859	44	1,040	55	985	45	1,257
Miscellaneous	655	582	595	384	664	341	721	381	756	659	727	900	753	1,026	736	1,009	504	559	538	635	485	549	517	574	625	625	748	766	791	1,207	982	1,483	1,254	2,133	1,146	2,561
World Total	1,924	20,538	1,893	19,669	2,032	22,652	2,099	25,837	2,087	25,537	1,954	25,464	1,829	27,822	1,799	31,696	1,553	31,292	1,539	33,383	1,540	36,131	1,729	40,171	2,129	46,970	2,447	52,118	2,762	57,320	3,242	67,690	3,554	77,073	3,748	96,433

- (Note)
1. Data Source : IHS (Former Lloyd's Register) "World Fleet Statistics".
 2. Ship Size Coverage : 100 Gross Tonnage and over.
 3. "Dry cargo" includes vessels of General cargo, Pax/General, Reefer, RoRo, Pax/RoRo and Other dry cargo.
 4. "Miscellaneous" includes vessels of Fishing, Offshore, Research, Towing/Pushing, Dredging and Other activities.

Fig 3. SHIP TYPE SHARE OF WORLD COMPLETIONS



(Note) 1. Data Source : IHS (Former Lloyd's Register) "World Fleet Statistics"
 2. Ship Size Coverage : 100 Gross Tonnage and over.

4. WORLD ORDERBOOK AT YEAR-END

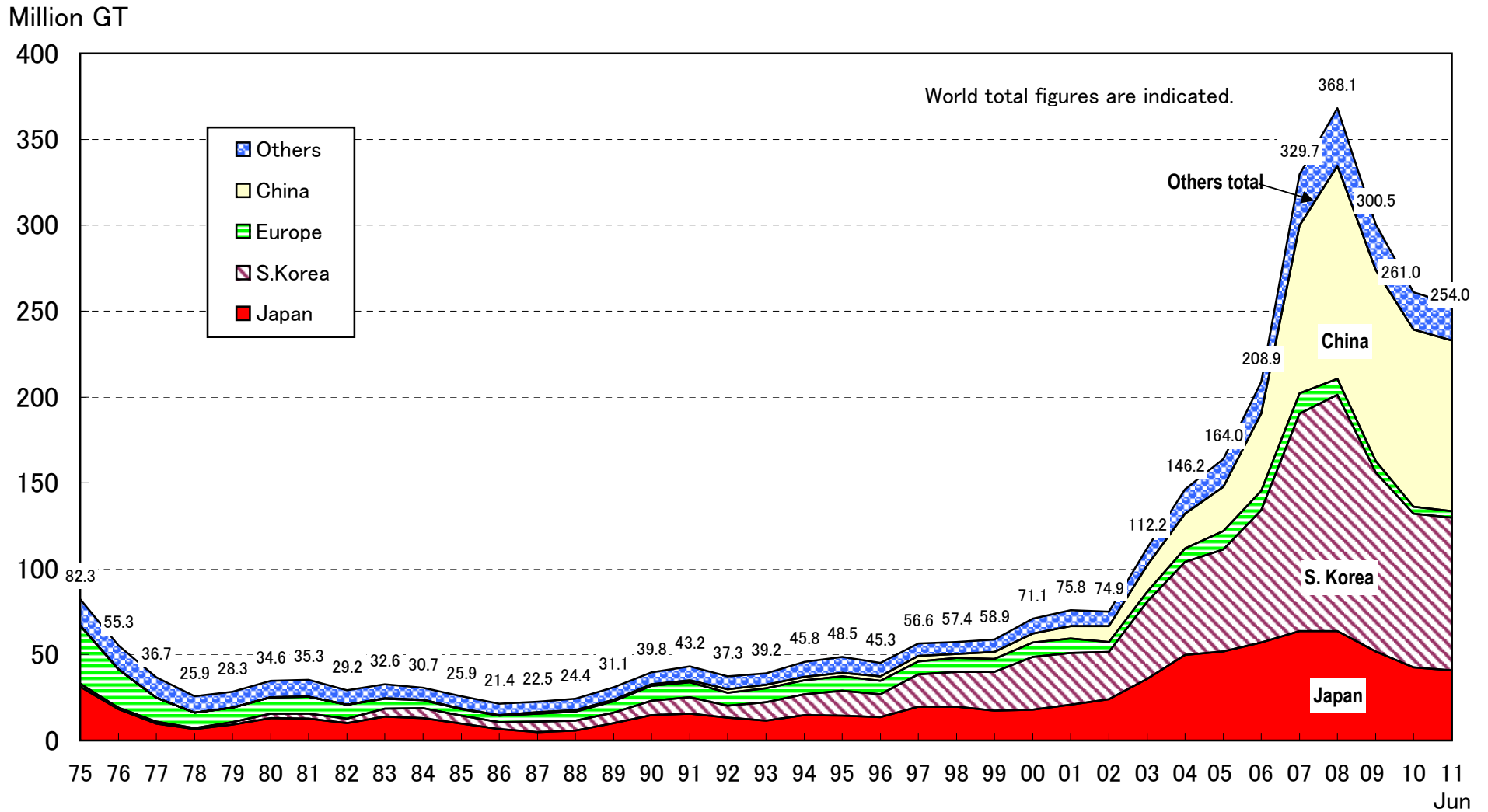
Country	2005			2006			2007			2008			2009			2010			30 Jun '11		
	No.	'000GT	share(%)	No.	'000GT	share(%)	No.	'000GT	share(%)	No.	'000GT	share(%)	No.	'000GT	share(%)	No.	'000GT	share(%)	No.	'000GT	share(%)
Japan	1168	51,871	31.6	1,313	56,933	27.3	1,495	63,814	19.4	1,607	63,641	17.3	1,286	51,966	17.3	1,105	42,474	16.3	1,047	40,757	16.0
S. Korea	1140	59,282	36.1	1,413	77,265	37.0	2,242	126,531	38.4	2,303	137,596	37.4	1,675	104,252	34.7	1,357	89,595	34.3	1,292	88,954	35.0
China	1027	25,940	15.8	1,650	44,778	21.4	3,139	97,761	29.6	3,999	123,961	33.7	3,523	111,148	37.0	2,967	103,031	39.5	2,942	99,391	39.1
Belgium	0	0	0.0	4	12	0.0	2	6	0.0	1	3	0.0	0	0	0.0	0	0	0.0	0	0	0.0
Denmark	16	1,584	1.0	11	1,424	0.7	23	1,462	0.4	21	1,148	0.3	12	555	0.2	5	116	0.0	5	60	0.0
France	11	676	0.4	15	851	0.4	20	763	0.2	13	723	0.2	9	438	0.1	9	283	0.1	11	319	0.1
Germany	187	4,085	2.5	199	4,151	2.0	203	4,165	1.3	181	3,568	1.0	85	1,988	0.7	55	1,459	0.6	55	1,458	0.6
Greece	1	16	0.0	2	17	0.0	3	20	0.0	4	7	0.0	4	3	0.0	4	4	0.0	4	4	0.0
Italy	91	2,239	1.4	96	2,175	1.0	118	2,570	0.8	98	1,747	0.5	83	1,965	0.7	47	1,293	0.5	40	1,055	0.4
Netherlands	233	614	0.4	232	622	0.3	253	741	0.2	100	516	0.1	84	452	0.2	70	331	0.1	74	282	0.1
U.K.	5	3	0.0	4	2	0.0	7	2	0.0	9	1	0.0	7	1	0.0	5	1	0.0	3	1	0.0
Finland	13	847	0.5	11	851	0.4	10	826	0.3	7	582	0.2	6	335	0.1	5	131	0.1	8	137	0.1
Norway	33	166	0.1	81	347	0.2	64	264	0.1	36	132	0.0	32	91	0.0	30	130	0.0	33	120	0.0
Sweden	0	0	0.0	4	27	0.0	2	20	0.0	3	37	0.0	2	24	0.0	0	0	0.0	0	0	0.0
Spain	115	441	0.3	143	744	0.4	165	865	0.3	148	784	0.2	120	656	0.2	83	349	0.1	66	217	0.1
Portugal	12	51	0.0	9	60	0.0	15	63	0.0	15	54	0.0	3	11	0.0	2	8	0.0	7	48	0.0
Europe total	717	10,722	6.5	811	11,283	5.4	885	11,767	3.6	636	9,302	2.5	447	6,520	2.2	315	4,106	1.6	306	3,700	1.5
Brazil	40	169	0.1	31	189	0.1	80	1,954	0.6	104	2,394	0.7	118	2,118	0.7	116	2,249	0.9	117	2,263	0.9
Poland	126	2,585	1.6	116	2,322	1.1	122	2,031	0.6	140	1,414	0.4	82	327	0.1	70	305	0.1	67	220	0.1
Singapore	98	340	0.2	77	259	0.1	95	263	0.1	115	451	0.1	107	297	0.1	86	264	0.1	86	319	0.1
Taiwan	52	2,224	1.4	58	2,378	1.1	67	2,838	0.9	62	2,647	0.7	47	2,222	0.7	42	1,947	0.7	50	2,731	1.1
U.S.A.	52	592	0.4	126	724	0.3	132	693	0.2	132	669	0.2	98	526	0.2	72	212	0.1	76	241	0.1
Croatia	75	2,360	1.4	61	1,879	0.9	69	1,997	0.6	64	1,665	0.5	36	832	0.3	24	542	0.2	24	455	0.2
India	97	554	0.3	148	780	0.4	246	2,615	0.8	287	3,538	1.0	261	3,424	1.1	257	2,436	0.9	255	2,075	0.8
Philippines	30	787	0.5	60	1,896	0.9	116	5,160	1.6	117	5,919	1.6	114	6,690	2.2	108	7,064	2.7	101	5,918	2.3
Rumania	100	1,522	0.9	127	1,681	0.8	146	3,043	0.9	164	3,202	0.9	111	1,944	0.6	80	1,116	0.4	101	1,452	0.6
Turkey	192	1,222	0.7	247	1,615	0.8	337	2,348	0.7	332	2,650	0.7	225	1,116	0.4	162	804	0.3	161	671	0.3
Vietnam	71	782	0.5	122	2,123	1.0	206	3,204	1.0	327	4,296	1.2	287	3,094	1.0	252	2,452	0.9	252	2,478	1.0
Others	537	3,070	1.9	548	2,770	1.3	678	3,714	1.1	952	4,725	1.3	809	4,036	1.3	809	2,420	0.9	867	2,363	0.9
Sub total	1,470	16,207	9.9	1,721	18,616	8.9	2,294	29,859	9.1	2,796	33,569	9.1	2,295	26,626	8.9	2,078	21,811	8.4	2,157	21,184	8.3
World Total	5,522	164,022	100.0	6,908	208,875	100.0	10,055	329,732	100.0	11,341	368,070	100.0	9,226	300,511	100.0	7,822	261,016	100.0	7,744	253,987	100.0

(Note) 1. Data Source : IHS (Former Lloyd's Register) "World Shipbuilding Statistics". Year-end basis.

2. Ship Size Coverage : 100 Gross Tonnage and over.

3. Europe total = Former AWES (present CESA) countries. Excludes Poland (member from '95), Rumania ('00), Croatia ('02), Lithuania & Bulgaria ('09) for comparisons with former periods.

Fig 4. WORLD ORDERBOOK AT YEAR-END



(Note) 1. Data Source : IHS (Former Lloyd's Register).
 2. Ship Size Coverage : 100 Gross Tonnage and over.

5. WORLD MERCHANT FLEETS BY REGISTRATION

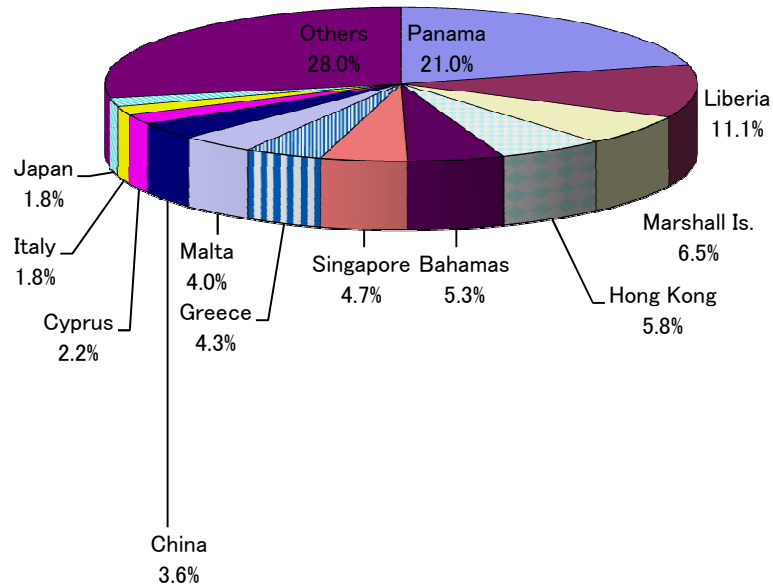
Year	1998 End		1999 End		2000 End		2001 End		2002 End		2003 End		2004 End		2005 End		2006 End		2007 End		2008 End		2009 End		2010 End		
	No.	'000GT	No.	'000GT	No.	'000GT	No.	'000GT	No.	'000GT	No.	'000GT	No.	'000GT	No.	'000GT	No.	'000GT	No.	'000GT	No.	'000GT	No.	'000GT	No.	'000GT	No.
Panama	6,143	98,222	6,143	105,248	6,184	114,382	6,245	122,352	6,247	124,729	6,302	125,722	6,477	131,452	6,838	141,822	7,183	154,965	7,605	168,166	8,065	183,503	8,100	190,663	7,986	201,264	
Liberia	1,717	60,492	1,629	54,107	1,557	51,451	1,566	51,784	1,535	50,400	1,553	52,435	1,538	53,899	1,653	59,600	1,907	68,405	2,171	76,573	2,306	82,389	2,456	91,696	2,726	106,708	
Marshall Is.	207	6,442	230	6,762	302	9,745	360	11,719	428	14,673	515	17,628	632	22,495	853	29,242	953	32,840	1,099	35,964	1,265	42,637	1,376	49,088	1,622	62,011	
Hong Kong	391	6,171	479	7,973	560	10,242	646	13,710	766	16,164	901	20,507	1,058	26,085	1,128	29,809	1,179	32,685	1,242	35,816	1,371	39,100	1,529	45,338	1,736	55,543	
Bahamas	1,286	27,716	1,294	29,483	1,295	31,445	1,312	33,386	1,348	35,798	1,297	34,752	1,316	35,388	1,361	38,418	1,402	40,831	1,430	43,739	1,446	46,543	1,426	48,119	1,384	50,370	
Singapore	1,677	20,370	1,736	21,780	1,728	21,491	1,729	21,023	1,768	21,148	1,761	23,241	1,842	26,283	1,977	30,990	2,079	32,174	2,257	36,252	2,451	39,886	2,563	41,047	2,667	44,870	
Greece	1,545	25,225	1,491	24,833	1,529	26,402	1,529	28,678	1,548	28,783	1,558	32,203	1,540	32,041	1,491	30,745	1,455	32,048	1,478	35,704	1,498	36,822	1,517	38,911	1,433	40,795	
Malta	1,416	24,075	1,574	28,205	1,505	28,170	1,421	27,053	1,350	26,331	1,301	25,134	1,181	22,353	1,220	23,016	1,294	24,850	1,421	27,754	1,532	31,633	1,613	35,037	1,724	38,738	
China	3,214	16,503	3,285	16,315	3,319	16,499	3,280	16,646	3,326	17,316	3,376	18,428	3,497	20,369	3,590	22,284	3,695	23,488	3,799	24,919	3,916	26,811	4,064	30,077	4,080	34,705	
Cyprus	1,602	23,302	1,556	23,641	1,475	23,206	1,407	22,762	1,325	22,997	1,198	22,054	1,084	21,283	992	19,019	971	19,032	985	18,954	1,016	20,109	1,026	20,169	1,014	20,732	
Italy	1,329	6,819	1,389	8,048	1,457	9,049	1,476	9,655	1,486	9,596	1,504	10,246	1,516	10,956	1,539	11,616	1,566	12,571	1,564	12,972	1,588	13,600	1,635	15,531	1,649	17,044	
Japan	8,921	17,779	8,462	17,063	8,012	15,257	7,924	14,565	7,458	13,918	7,151	13,562	6,937	13,180	6,842	12,751	6,731	12,798	6,519	12,788	6,316	13,536	6,221	14,725	6,150	16,858	
Norway	2,325	23,136	2,350	23,446	2,349	22,604	2,363	22,591	2,299	22,195	2,253	20,509	2,173	18,936	2,068	17,532	2,078	18,222	2,088	18,156	2,055	18,311	2,023	16,614	1,995	16,529	
U.K.	1,421	4,085	1,391	4,331	1,448	5,532	1,462	6,029	1,525	8,045	1,594	10,844	1,569	11,123	1,563	11,194	1,598	12,150	1,637	13,444	1,676	15,247	1,697	16,958	1,638	16,478	
Germany	1,158	8,084	1,028	6,514	994	6,552	906	6,300	857	6,546	782	6,112	826	8,246	894	11,497	881	11,364	885	12,934	961	15,283	948	15,157	931	15,283	
S. Korea	2,381	5,694	2,417	5,735	2,502	6,200	2,426	6,395	2,532	7,050	2,604	6,757	2,700	7,826	2,778	9,251	2,820	10,477	2,946	13,102	3,001	14,145	3,009	12,893	2,913	12,513	
Denmark	1,056	5,790	1,057	5,913	1,081	6,926	1,054	7,109	1,043	7,603	1,013	7,727	1,000	7,763	1,003	8,290	963	8,800	953	9,476	963	10,570	972	11,336	987	12,126	
U.S.A.	5,626	11,852	5,642	12,026	5,792	11,111	5,824	10,907	6,080	10,371	6,185	10,409	6,414	10,744	6,472	11,058	6,498	11,218	6,486	11,411	6,524	11,268	6,546	12,018	6,371	11,941	
Isle of Man	207	4,203	220	4,729	223	5,431	275	6,057	283	5,672	302	6,416	333	7,169	362	8,406	360	8,632	339	8,450	345	8,965	363	10,194	385	11,621	
Antigua&Barbuda	575	2,788	664	3,622	759	4,224	840	4,688	886	5,066	950	6,005	1,028	6,915	1,030	7,179	1,086	7,947	1,130	8,635	1,195	9,537	1,237	9,993	1,293	10,738	
Bermuda	127	4,811	140	6,187	129	5,752	121	5,313	113	4,798	106	4,844	122	6,166	136	7,312	149	8,413	152	9,170	153	9,592	155	9,706	158	10,536	
Indonesia	2,359	3,252	2,369	3,241	2,480	3,384	2,528	3,613	2,628	3,723	2,700	3,840	2,826	4,072	3,214	4,330	4,271	5,287	4,469	5,670	4,464	5,810	5,205	8,093	5,763	9,279	
India	947	6,777	971	6,915	987	6,662	1,018	6,688	1,010	6,142	1,028	6,961	1,066	7,518	1,096	8,065	1,181	8,381	1,417	9,168	1,460	9,283	1,349	9,027	1,404	9,244	
Malaysia	828	5,209	828	5,245	865	5,328	882	5,207	915	5,394	972	5,746	1,013	6,057	1,052	5,759	1,101	6,389	1,151	6,975	1,238	7,078	1,344	7,718	1,391	8,073	
Netherland	1,358	5,234	1,433	5,923	1,494	6,403	1,513	6,855	1,517	7,052	1,526	7,213	1,490	7,285	1,457	7,180	1,445	7,230	1,432	7,404	1,498	8,249	1,504	8,373	1,455	8,001	
Russia	4,723	11,090	4,694	10,649	4,755	10,486	4,727	10,248	4,943	10,380	4,950	10,431	3,802	8,639	3,722	8,334	3,656	8,046	3,481	7,587	3,444	7,527	3,465	7,650	3,485	7,711	
France	808	4,849	822	4,925	808	4,816	814	4,678	815	4,731	831	4,859	830	4,975	864	5,611	881	6,165	918	6,350	951	6,324	952	6,842	799	6,668	
Turkey	1,135	6,251	1,152	6,325	1,153	5,833	1,146	5,897	1,147	5,659	1,113	4,951	1,114	4,679	1,156	5,045	1,184	4,849	1,252	4,995	1,301	5,181	1,344	5,451	1,334	5,947	
Philippines	1,726	8,508	1,897	7,650	1,865	7,002	1,697	6,030	1,686	5,320	1,703	5,116	1,730	5,137	1,866	5,199	1,840	5,072	1,768	5,066	1,808	5,029	1,823	5,219	1,946	5,256	
St. Vincent	1,317	7,875	1,333	7,105	1,366	7,026	1,318	7,073	1,304	6,584	1,219	6,318	1,182	6,324	1,044	5,905	1,064	6,107	1,048	5,928	1,009	5,203	1,043	5,152	942	4,707	
Taiwan	686	5,492	684	5,371	680	5,086	656	4,618	649	4,289	637	3,477	639	3,556	636	3,226	628	2,786	629	2,750	637	2,672	641	2,636	677	2,869	
Brazil	504	4,171	503	3,933	505	3,809	475	3,687	476	3,449	482	3,258	494	2,628	510	2,343	525	2,281	538	2,290	569	2,359	592	2,378	617	2,393	
Ukraine	966	2,033	936	1,775	894	1,546	838	1,408	828	1,350	829	1,379	647	1,145	658	1,154	655	1,136	655	1,145	644	1,087	622	905	528	787	
Iran	382	3,347	380	3,546	395	4,234	389	3,944	380	4,128	382	4,852	430	5,324	453	5,271	475	5,207	508	3,577	503	1,096	542	988	581	755	
Poland	447	1,424	439	1,319	429	1,119	393	618	383	586	373	282	378	163	359	190	355	193	351	193	358	213	338	204	314	162	
Others	23,318	52,822	24,199	53,728	24,670	53,649	25,379	55,264	26,126	57,597	26,948	61,001	27,536	65,149	28,228	66,472	28,827	68,814	29,701	71,460	30,214	74,103	30,954	76,730	31,314	78,727	
World Total	85,828	531,893	86,817	543,610	87,546	558,054	87,939	574,551	89,010	585,583	89,899	605,218	89,960	633,321	92,105	675,116	94,936	721,855	97,504	774,937	99,741	830,704	102,194	882,635	103,392	957,982	

- (Note) 1. Data Source : IHS (Former Lloyd's Register) "World Fleet Statistics".
2. Ship Size Coverage : 100 Gross Tonnage and over.
3. Second Registries are included in Denmark, France, Netherlands, Norway.
4. Dominant registered countries or regions (more than 2 mil.GT) out of "Others" category as of 2010-end are : Belgium 4.50, Vietnam 3.70, Sweden 3.56, Spain 3.07, Canada 3.06, Cayman Islands 3.02, Thailand 2.94, Vanuatu 2.44 and Gibraltar 2.06.

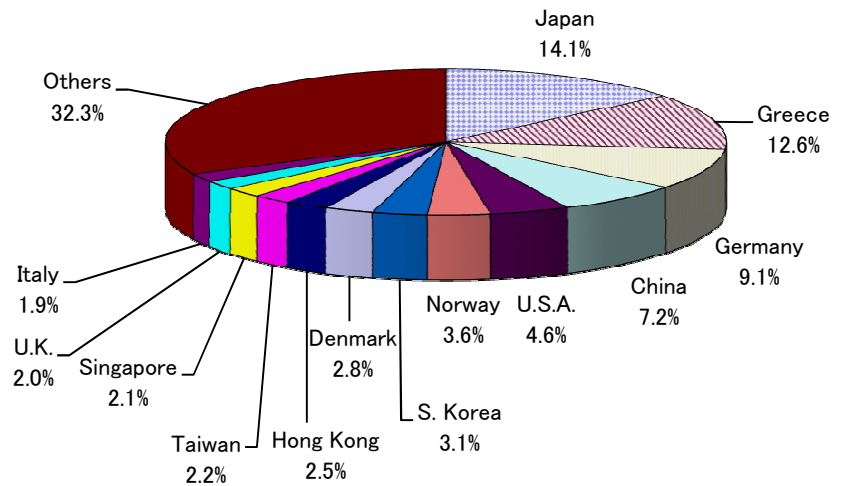
Fig 5. MERCHANT FLEETS SHARE (%) BY REGISTRATION & BY NATIONALITY OF OWNER

< As of End 2010 / GT Basis >

(1) By Registration (%)



(2) By Nationality of Owner (%)



Note: Others 32.3% includes unknown nationality.

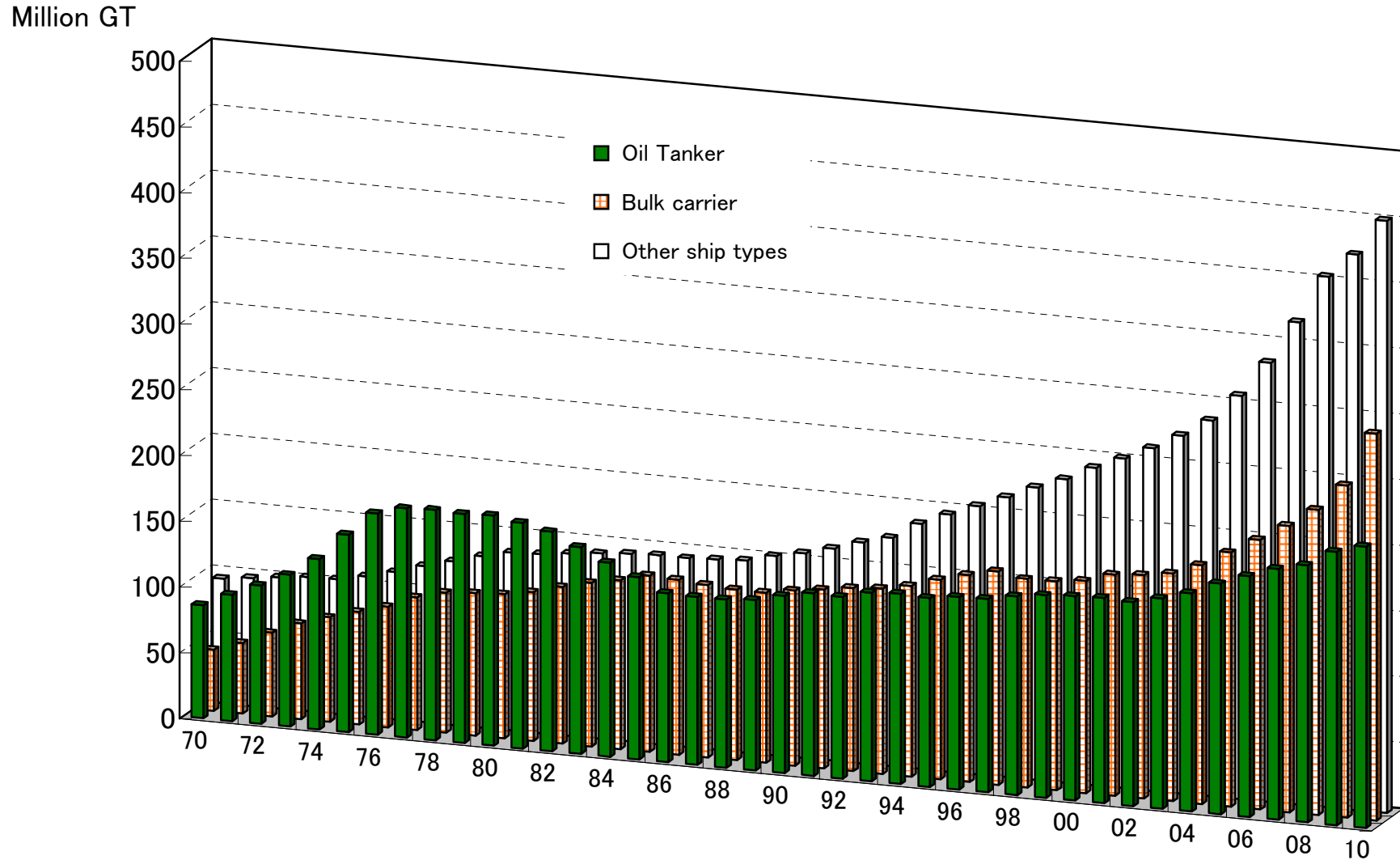
(Note) 1. Data Source : IHS (Former Lloyd's Register)
2. Ship Size Coverage : 100 Gross Tonnage and over.

6. WORLD MERCHANT FLEETS BY SHIP TYPE

Year	World Total		Oil Tanker		Bulk Carrier		Other ship types		GT share (%)		
	No.	'000 GT	No.	'000 GT	No.	'000 GT	No.	'000 GT	Oil Tanker	Bulk Carrier	Other ship types
1955	32,492	100,569	3,575	26,455			28,917	74,114	26.3		73.7
1960	36,311	129,770	4,543	41,465			31,768	88,305	32.0		68.0
1965	41,865	160,392	5,307	55,046	1,403	18,757	35,155	86,589	34.3	11.7	54.0
1970	52,444	227,490	6,103	86,140	2,528	46,652	43,813	94,698	37.9	20.5	41.6
1975	63,724	342,162	7,024	150,057	3,711	85,548	52,989	106,557	43.9	25.0	31.1
76	65,887	372,000	7,020	168,161	3,932	91,738	54,935	112,101	45.2	24.7	30.1
77	67,945	393,678	6,912	174,124	4,313	100,921	56,720	118,633	44.2	25.6	30.1
78	69,020	406,002	6,882	175,035	4,557	106,545	57,581	124,422	43.1	26.2	30.6
79	71,129	413,021	6,950	174,213	4,638	108,323	59,541	130,485	42.2	26.2	31.6
1980	73,832	419,911	7,112	175,004	4,706	109,596	62,014	135,311	41.7	26.1	32.2
81	73,864	420,835	6,986	171,697	4,736	113,084	62,142	136,054	40.8	26.9	32.3
82	75,151	424,742	7,021	166,828	4,947	119,298	63,183	138,616	39.3	28.1	32.6
83	76,106	422,590	6,882	157,279	5,073	124,397	64,151	140,914	37.2	29.4	33.3
84	76,068	418,682	6,647	147,463	5,229	128,334	64,192	142,885	35.2	30.7	34.1
1985	76,395	416,269	6,590	138,448	5,391	133,983	64,414	143,838	33.3	32.2	34.6
86	75,266	404,910	6,490	128,426	5,274	132,908	63,502	143,576	31.7	32.8	35.5
87	75,240	403,498	6,490	127,660	5,099	131,028	63,651	144,810	31.6	32.5	35.9
88	75,680	403,406	6,565	127,843	4,980	129,635	64,135	145,928	31.7	32.1	36.2
89	76,100	410,481	6,383	129,578	5,061	129,482	64,656	151,421	31.6	31.5	36.9
1990	78,336	423,627	6,609	134,836	5,156	133,190	66,571	155,601	31.8	31.4	36.7
91	80,030	436,027	6,768	138,897	5,201	135,885	68,061	161,245	31.9	31.2	37.0
92	79,726	445,169	6,342	138,149	5,894	139,042	67,490	167,978	31.0	31.2	37.7
93	80,655	457,915	6,847	143,441	5,952	140,915	67,856	173,559	31.3	30.8	37.9
94	80,676	475,859	6,639	144,595	5,964	144,914	68,073	186,350	30.4	30.5	39.2
1995	82,890	490,662	6,761	143,521	6,165	151,694	69,964	195,447	29.3	30.9	39.8
96	84,264	507,873	6,878	146,366	6,409	157,382	70,977	204,125	28.8	31.0	40.2
97	85,494	522,197	6,933	147,108	6,552	162,169	72,009	212,920	28.2	31.1	40.8
98	85,828	531,893	6,960	151,036	6,413	158,565	72,455	222,292	28.4	29.8	41.8
99	86,817	543,610	7,051	154,092	6,357	158,958	73,409	230,560	28.3	29.2	42.4
2000	87,546	558,054	7,009	155,429	6,342	161,186	74,195	241,439	27.9	28.9	43.3
01	87,939	574,551	6,984	156,068	6,476	168,000	74,479	250,483	27.2	29.2	43.6
02	89,010	585,583	7,294	155,176	6,487	169,954	75,229	260,453	26.5	29.0	44.5
03	89,899	605,218	7,317	159,958	6,500	173,071	76,082	272,190	26.4	28.6	45.0
04	89,960	633,321	7,262	166,062	6,690	181,444	76,008	285,815	26.2	28.6	45.1
2005	92,105	675,116	7,410	175,336	6,964	193,213	77,731	306,567	26.0	28.6	45.4
06	94,936	721,855	7,549	183,201	7,204	204,828	80,183	333,826	25.4	28.4	46.2
07	97,504	774,937	7,209	190,612	7,477	217,629	82,818	366,696	24.6	28.1	47.3
08	99,741	830,704	7,221	195,441	7,744	231,964	84,776	403,299	23.5	27.9	48.5
09	102,194	882,635	7,453	207,835	8,081	252,524	86,660	422,276	23.5	28.6	47.8
2010	103,392	957,982	7,587	213,903	8,938	294,007	86,867	450,073	22.3	30.7	47.0

- (Note) 1. Data Source : IHS (Former Lloyd's Register) "Statistical tables" until 1991. "World Fleet Statistics" from 1992.
2. Ship Size Coverage : 100 Gross Tonnage and over.
3. Combined carriers are included in "Bulk Carrier" category.
4. Mid year basis until 1991. End year basis from 1992.

Fig 6. WORLD MERCHANT FLEETS BY SHIP TYPE



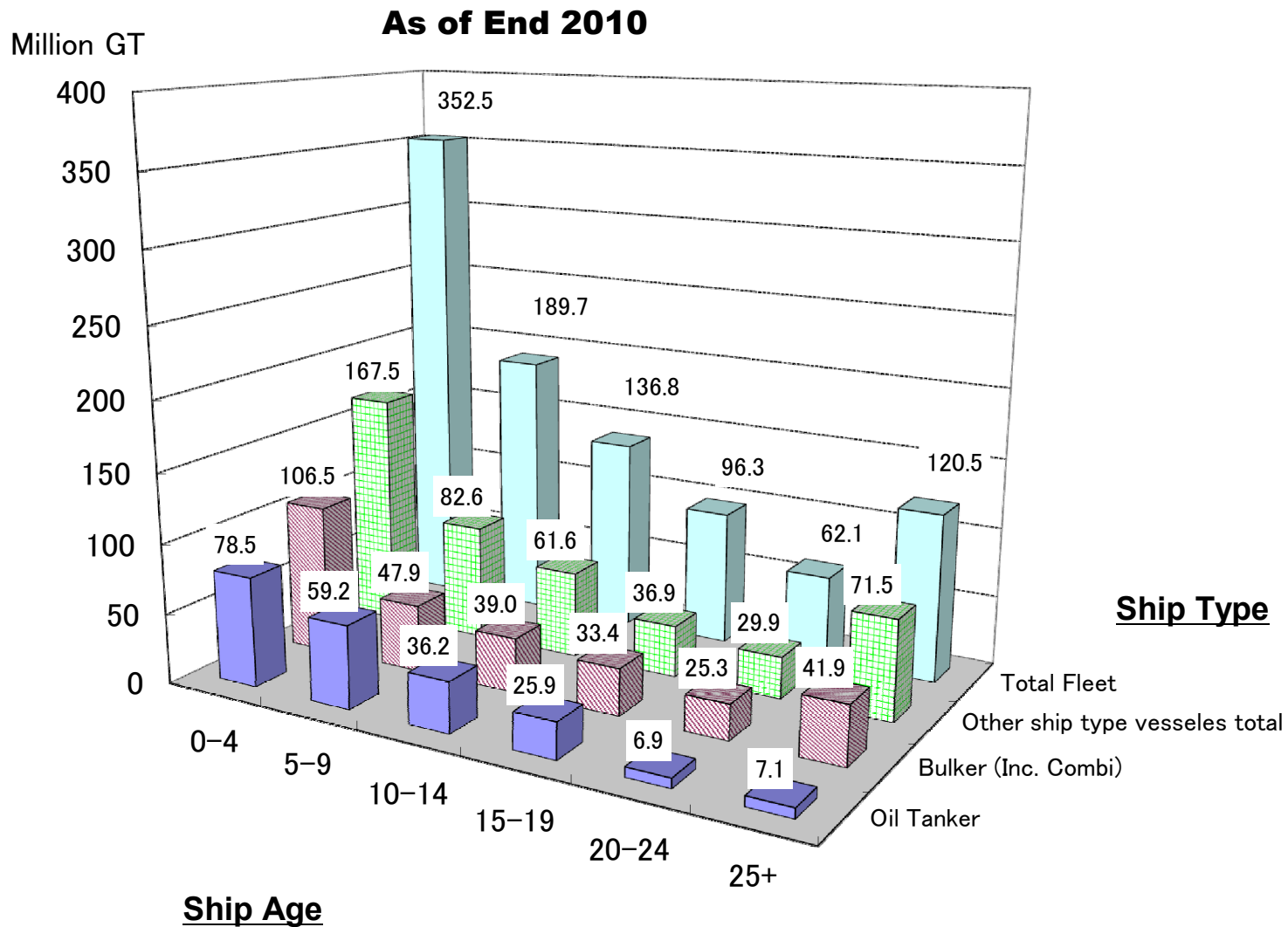
(Note) 1. Data Source : IHS (Former Lloyd's Register). Mid year basis until 1991 and End year basis from 1992.
 2. Ship Size Coverage : 100 Gross Tonnage and over.
 3. Combined carriers are included in "Bulk carrier" category.

7. WORLD MERCHANT FLEETS' AGE PROFILE BY SHIP TYPE

	Ship Age Ship Type	Total		0 ~ 4 years		5 ~ 9 years		10 ~ 14 years		15 ~ 19 years		20 ~ 24 years		25 years +	
		No.	'000 GT	No.	'000 GT	No.	'000 GT	No.	'000 GT	No.	'000 GT	No.	'000 GT	No.	'000 GT
2001 (Year End)	Total	87,939	574,551	9,210	141,788	9,948	107,578	10,932	72,003	12,561	90,533	14,386	84,460	30,902	78,191
	Oil Tanker	6,984	156,068	648	37,570	1,092	36,505	840	22,821	832	13,552	1,245	21,724	2,327	23,896
	Bulk Carrier	6,476	168,000	1,187	40,934	999	31,921	733	20,080	1,419	38,589	1,097	22,709	1,041	13,766
	Others	74,479	250,483	7,375	63,284	7,857	39,152	9,359	29,102	10,310	38,392	12,044	40,027	27,534	40,529
2002 (Year End)	Total	89,010	585,583	7,016	124,265	10,108	119,185	10,392	86,790	11,704	79,908	13,915	80,637	35,875	94,799
	Oil Tanker	7,294	155,176	596	38,783	803	27,893	1,083	35,031	840	14,253	1,188	17,476	2,784	21,740
	Bulk Carrier	6,487	169,954	904	32,751	1,251	39,864	727	21,197	1,156	30,436	1,054	26,342	1,395	19,365
	Others	75,229	260,453	5,516	52,731	8,054	51,427	8,582	30,562	9,708	35,219	11,673	36,820	31,696	53,694
2003 (Year End)	Total	89,899	605,218	8,808	160,561	10,156	119,181	10,430	86,775	11,692	79,881	13,802	77,487	35,011	81,333
	Oil Tanker	7,317	159,958	851	53,386	806	27,896	1,078	34,968	841	14,248	1,146	15,269	2,595	14,191
	Bulk Carrier	6,500	173,071	1,064	39,096	1,246	39,797	728	21,200	1,153	30,352	1,039	25,865	1,270	16,761
	Others	76,082	272,190	6,893	68,079	8,104	51,488	8,624	30,607	9,698	35,281	11,617	36,354	31,146	50,382
2004 (Year End)	Total	89,960	633,321	9,073	173,619	10,119	127,270	10,027	91,950	11,255	74,743	13,184	82,093	36,302	83,646
	Oil Tanker	7,262	166,062	935	56,306	753	32,153	1,137	35,643	854	17,380	1,001	13,198	2,582	11,381
	Bulk Carrier	6,690	181,444	1,147	42,605	1,218	40,096	749	23,374	954	25,201	1,271	32,289	1,351	17,879
	Others	76,008	285,815	6,991	74,708	8,148	55,022	8,141	32,933	9,447	32,161	10,912	36,606	32,369	54,386
2005 (Year End)	Total	92,105	675,116	9,773	189,373	10,047	136,674	9,975	98,573	10,991	72,184	12,760	87,895	38,559	90,416
	Oil Tanker	7,410	175,336	1,046	59,717	726	36,695	1,180	37,313	836	19,311	915	12,099	2,707	10,202
	Bulk Carrier	6,964	193,213	1,273	48,127	1,140	38,800	835	25,899	812	22,747	1,425	37,921	1,479	19,719
	Others	79,460	306,567	7,454	81,529	8,181	61,178	7,960	35,362	9,343	30,126	10,420	37,876	36,102	60,496
2006 (Year End)	Total	94,936	721,855	11,019	210,224	10,068	142,139	10,153	107,742	10,965	71,937	12,272	88,004	40,459	101,810
	Oil Tanker	7,549	183,201	1,172	63,429	691	37,679	1,157	36,701	881	22,880	850	11,944	2,798	10,568
	Bulk Carrier	7,204	204,828	1,279	50,340	1,175	40,666	985	31,465	731	19,661	1,377	37,375	1,657	25,320
	Others	80,183	333,827	8,568	96,455	8,202	63,794	8,011	39,576	9,353	29,396	10,045	38,685	36,004	65,922
2007 (Year End)	Total	97,504	774,937	12,261	234,079	9,973	150,286	10,379	114,766	10,696	76,800	11,873	84,144	42,322	114,861
	Oil Tanker	7,209	190,612	1,244	65,236	748	45,133	974	31,102	870	28,136	731	11,558	2,642	9,447
	Bulk Carrier	7,477	217,629	1,371	55,759	1,098	38,192	1,172	38,703	704	18,401	1,246	33,637	1,886	32,937
	Others	82,818	366,696	9,646	113,084	8,127	66,961	8,233	44,961	9,122	30,263	9,896	38,949	37,794	72,477
2008 (Year End)	Total	99,741	830,704	13,863	265,364	10,053	161,771	10,523	119,406	10,479	86,169	11,468	77,959	43,355	120,035
	Oil Tanker	7,221	195,441	1,286	65,547	865	53,113	810	27,795	962	28,888	688	11,043	2,610	9,055
	Bulk Carrier	7,744	231,964	1,552	62,324	1,073	38,916	1,247	40,003	754	25,379	1,146	30,389	1,972	34,953
	Others	84,776	403,299	11,025	137,493	8,115	69,742	8,466	51,609	8,763	31,903	9,634	36,526	38,773	76,027
2009 (Year End)	Total	102,194	882,635	15,496	302,196	10,475	174,569	10,536	127,992	10,168	90,729	11,056	66,628	44,463	120,522
	Oil Tanker	7,453	207,835	1,453	74,060	923	55,562	757	31,760	1,021	27,562	646	10,135	2,653	8,756
	Bulk Carrier	8,081	252,524	1,855	75,126	1,156	42,404	1,222	40,724	794	29,418	948	25,926	2,106	38,926
	Others	86,660	422,276	12,188	153,010	8,396	76,602	8,557	55,507	8,353	33,749	9,462	30,567	39,704	72,839
2010 (Year End)	Total	103,392	957,982	17,148	352,513	11,105	189,720	10,419	136,825	10,057	96,309	10,704	62,128	43,959	120,487
	Oil Tanker	7,587	213,903	1,589	78,493	1,048	59,197	730	36,247	1,058	25,938	617	6,943	2,545	7,086
	Bulk Carrier	8,938	294,007	2,562	106,488	1,299	47,933	1,144	38,952	894	33,432	829	25,279	2,210	41,922
	Others	86,867	450,073	12,997	167,532	8,758	82,590	8,545	61,626	8,105	36,940	9,258	29,906	39,204	71,479

- (Note) 1. Data Source : IHS (Former Lloyd's Register) "World Fleet Statistics".
2. Ship Size Coverage : 100 Gross Tonnage and over.
3. Combined carriers are included in "Bulk Carrier" category.

Fig 7. WORLD MERCHANT FLEETS' AGE PROFILE BY SHIP TYPE



(Note) 1. Data Source : IHS (Former Lloyd's Register) "World Fleet Statistics"
 2. Ship Size Coverage : 100 Gross Tonnage and over.

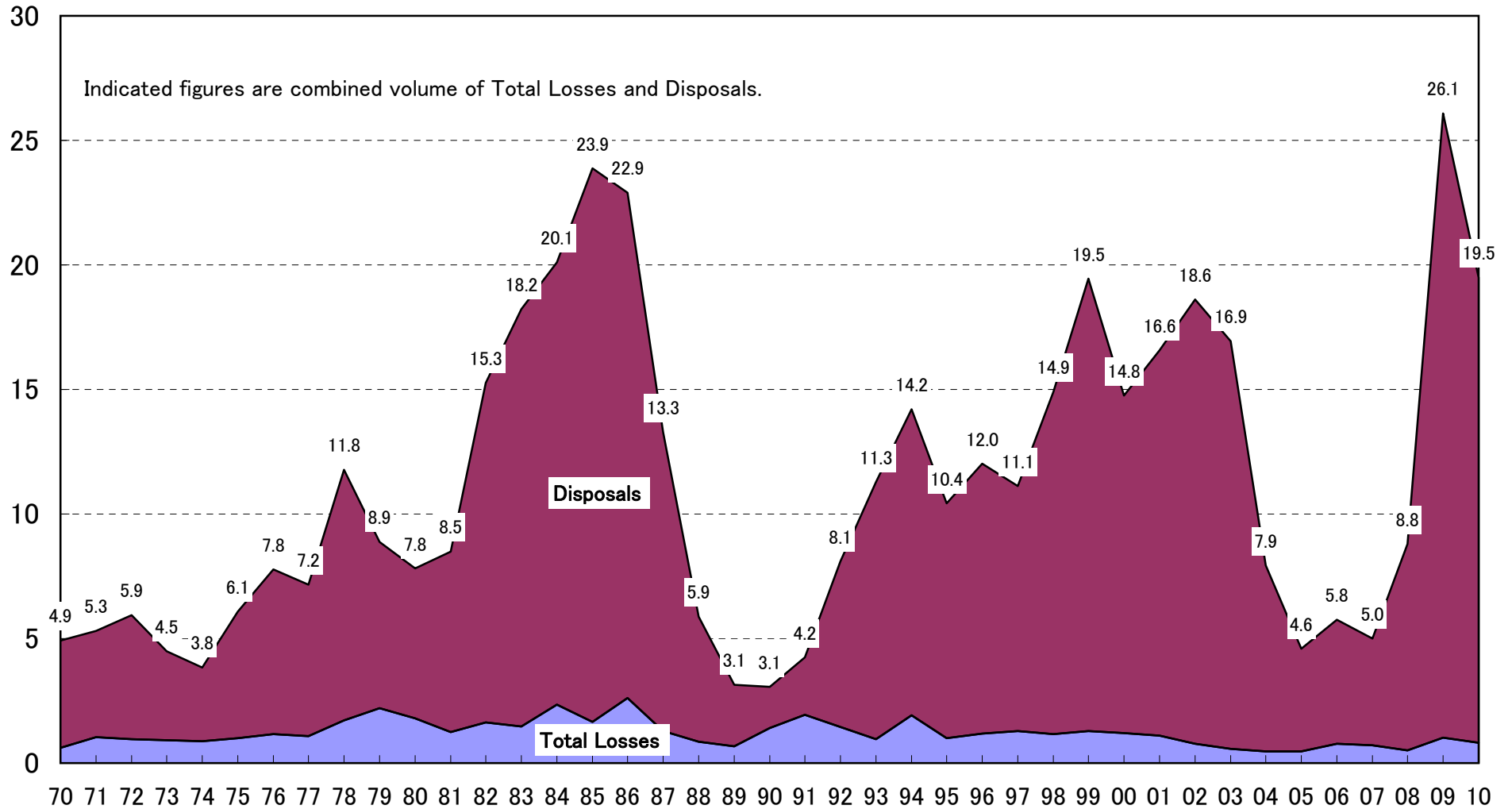
8. WORLD "TOTAL LOSSES" AND "DISPOSALS"

Year	TOTAL LOSSES (by Incidents)			DISPOSALS (Scrap)			TOTAL (Total losses + Disposals)	
	No.	'000 GT	Loss Ratio %	No.	'000 GT	Disposal Ratio %	No.	'000 GT
1970	352	613	0.27	1,030	4,311	1.90	1,382	4,924
1975	336	995	0.29	626	5,077	1.48	962	6,072
76	345	1,156	0.31	734	6,615	1.78	1,079	7,771
77	336	1,073	0.27	914	6,093	1.55	1,250	7,166
78	473	1,711	0.42	1,078	10,070	2.48	1,551	11,781
79	465	2,210	0.54	923	6,665	1.61	1,388	8,875
1980	387	1,804	0.43	903	6,022	1.43	1,290	7,826
81	359	1,238	0.29	762	7,252	1.72	1,121	8,490
82	402	1,632	0.38	1,113	13,624	3.21	1,515	15,256
83	340	1,473	0.35	1,310	16,759	3.97	1,650	18,232
84	327	2,354	0.56	1,785	17,751	4.24	2,112	20,105
1985	307	1,651	0.40	2,360	22,229	5.34	2,667	23,880
86	265	2,609	0.64	1,888	20,288	5.01	2,153	22,897
87	219	1,284	0.32	1,474	12,009	2.98	1,693	13,293
88	231	865	0.21	1,452	5,015	1.24	1,683	5,880
89	211	667	0.16	695	2,477	0.60	906	3,144
1990	244	1,412	0.33	468	1,645	0.39	712	3,057
91	321	1,937	0.44	587	2,306	0.53	908	4,243
92	266	1,453	0.33	601	6,657	1.50	867	8,110
93	278	968	0.21	878	10,310	2.25	1,156	11,278
94	240	1,920	0.40	945	12,293	2.58	1,185	14,213
1995	252	1,000	0.20	874	9,435	1.92	1,126	10,435
96	257	1,190	0.23	917	10,822	2.13	1,174	12,012
97	215	1,288	0.25	888	9,839	1.88	1,103	11,127
98	263	1,158	0.22	969	13,737	2.58	1,232	14,895
99	222	1,294	0.24	1,045	18,161	3.34	1,267	19,454
2000	216	1,204	0.22	827	13,552	2.43	1,043	14,755
01	187	1,096	0.19	887	15,483	2.69	1,074	16,579
02	149	773	0.13	927	17,831	3.05	1,076	18,604
03	166	576	0.10	1,062	16,360	2.70	1,228	16,936
04	136	463	0.07	817	7,469	1.18	953	7,932
2005	162	479	0.07	562	4,107	0.61	724	4,586
06	168	781	0.11	682	4,976	0.69	850	5,757
07	196	718	0.09	596	4,288	0.55	792	5,006
08	170	520	0.06	753	8,284	1.00	923	8,804
09	196	1,023	0.12	1,378	25,065	2.84	1,574	26,088
2010	172	807	0.08	1,232	18,674	1.95	1,404	19,481

- (Note) 1. Data Source : IHS (Former Lloyd's Register) "Casualty Return" until 1989. "World Casualty Statistics" from 1990.
2. Ship Size Coverage : 100 Gross Tonnage and over.
3. Loss (Disposal) Ratio = Lost (Disposed) Fleet / World Total Existing Fleet at mid year (end year from 1992).

Fig 8. WORLD "TOTAL LOSSES" AND "DISPOSALS"

Million GT



(Note) 1. Data source : IHS (Former Lloyd's Register).
 2. Ship Size Coverage : 100 Gross Tonnage and over.

9. WORLD DISPOSALS BY COUNTRY OF BREAKING

Year	1979		1980		1981		1982		1983		1984		1985		1986		1987		1988		1989		1990		1991		1992		1993		1994	
	No.	'000GT	No.	'000GT	No.	'000GT	No.	'000GT	No.	'000GT	No.	'000GT	No.	'000GT	No.	'000GT	No.	'000GT	No.	'000GT	No.	'000GT	No.	'000GT	No.	'000GT	No.	'000GT	No.	'000GT		
Taiwan	255	3,969	222	4,409	95	5,268	198	7,829	204	7,815	279	6,687	171	7,822	287	7,773	210	4,415	131	1,521	21	164	1	2	4	48	4	83				
Spain	87	654	68	279	26	147	41	371	51	421	78	573	87	603	78	581	67	150	47	193	28	31	24	13	26	13	76	48	47	42	21	33
S. Korea	30	430	7	168	9	299	35	2,176	69	3,896	90	4,149	56	2,551	72	2,569	61	1,254	15	116	8	158	2	4	1	8	3	2	1	5		
Pakistan	35	205	57	300	97	766	140	1,605	126	1,689	168	1,121	144	1,143	132	861	144	645	76	209	20	39	2	2	21	445	32	729	33	917	34	2,166
Italy	36	179	28	101	44	105	23	79	39	306	42	138	48	198	68	311	25	117	33	134	14	22	10	7	5	8	7	11	8	9	6	5
Croatia	14	120	17	62	9	57	14	131	16	106	18	78	26	130	29	97	9	22	9	9	16	15	4	1	4	4					4	1
Japan	283	439	331	129	260	72	336	295	445	505	463	913	487	973	449	770	425	608	470	175	152	45	350	81	340	81	337	82	196	57	73	20
China	4	24	1	7	1	11			10	132	163	2,114	282	5,019	242	4,567	102	1,887	33	556	37	477	10	81	7	172	54	2,213	159	5,786	115	2,848
India	21	129	24	136	24	143	43	313	61	524	60	459	135	1,303	68	636	137	1,684	60	462	66	678	112	1,092	63	696	146	1,925	142	1,911	186	2,802
Bangladesh					5	42	25	223	42	391	59	641	61	818	26	268	33	318	55	479	30	347	21	217	40	512	45	1,181	44	1,396	59	2,134
Turkey	2	10	4	23	2	15	9	83	1	4	8	50	26	383	27	418	19	134	66	338	39	151	26	102	29	77	24	79	23	82	33	97
Others	156	505	144	407	190	327	249	520	246	970	357	828	837	1,287	410	1,437	242	774	457	823	264	350	153	213	74	49	119	72	175	468	110	320
World Total	923	6,665	903	6,022	762	7,252	1,113	13,624	1,310	16,759	1,785	17,751	2,360	22,229	1,888	20,288	1,474	12,009	1,452	5,015	695	2,477	468	1,645	587	2,306	601	6,657	878	10,310	945	12,293

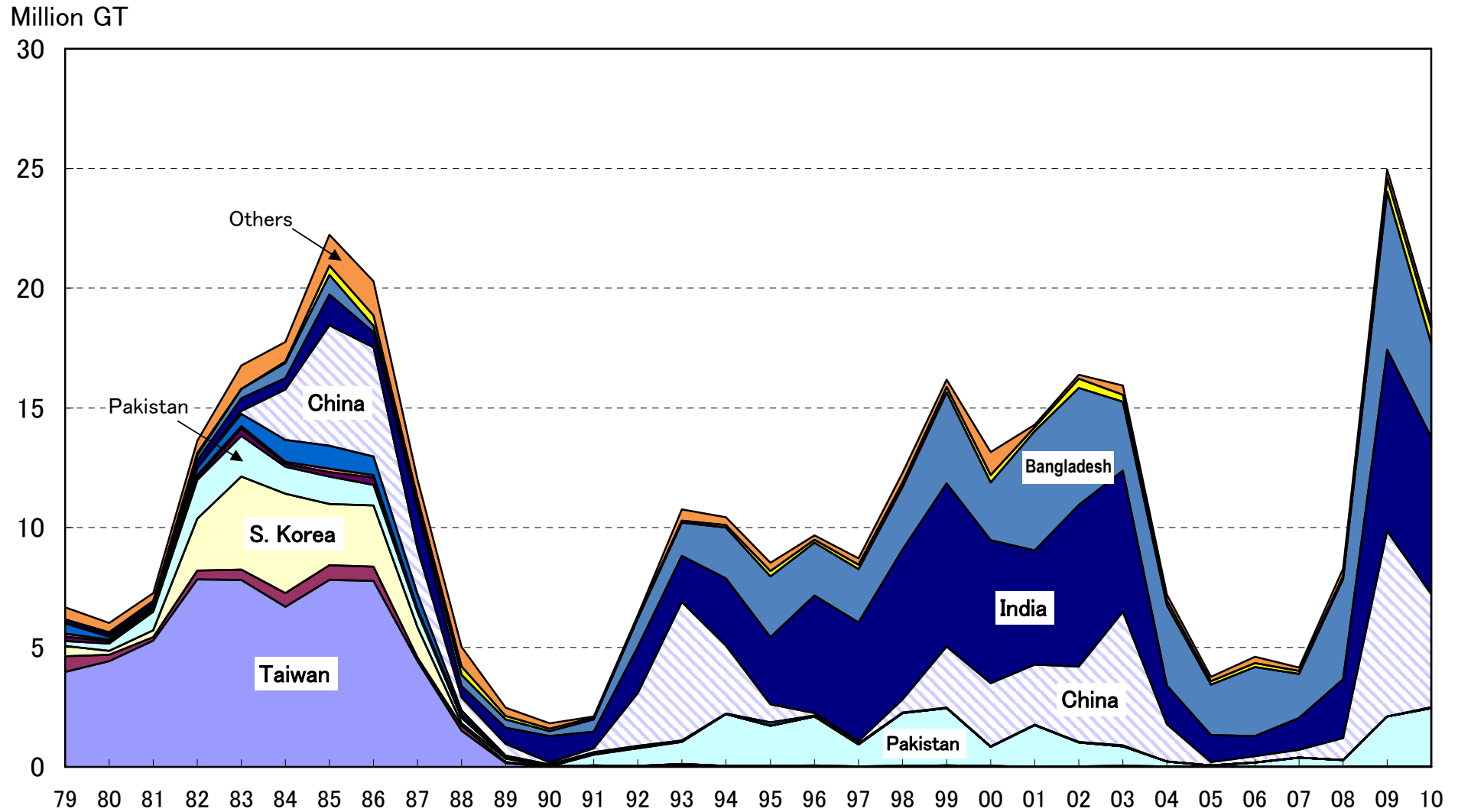
Year	1995		1996		1997		1998		1999		2000		2001		2002		2003		2004		2005		2006		2007		2008		2009		2010	
	No.	'000GT	No.	'000GT	No.	'000GT	No.	'000GT	No.	'000GT	No.	'000GT	No.	'000GT	No.	'000GT	No.	'000GT	No.	'000GT	No.	'000GT	No.	'000GT	No.	'000GT	No.	'000GT	No.	'000GT		
Taiwan							1	6	3	10	1	14																				
Spain	61	40	51	48	19	19	23	33	22	48	21	26	10	9	20	27	14	33	9	13	6	5	2	1	2	1	12	6	18	14	28	12
S. Korea	1	3	2	4					2	7	1	1					5	2,303	3	5.8	1	0.467						1	1			
Pakistan	25	1,670	33	2,062	21	930	57	2,210	43	2,380	25	789	27	1,739	20	997	49	817	26	209	12	48	19	187	24	380	25	274	101	2,101	103	2,443
Italy	2	1	1	1	1	0					2	2	2	7	4	2	7	7	2	1			1	0	1	1				1	1	
Croatia							1	0					1	0	2	1	3	1,898	3	0.831	2	0.889	3	0			2	0			1	0
Japan	116	146	91	25	124	30	64	19	103	31	94	22	47	12	102	25	46	46	12	6			1	1			1	0	2	1	1	46
China	53	754	28	104	32	99	30	550	68	2,564	78	2,637	70	2,510	70	3,139	119	5,582	70	1,538	8	151	9	254	26	341	38	928	301	7,738	187	4,723
India	189	2,810	315	4,920	363	4,948	370	6,256	371	6,803	340	5,987	347	4,768	326	6,751	383	5,886	206	1,620	128	1,123	102	853	134	1,332	198	2,458	425	7,561	422	6,534
Bangladesh	53	2,539	55	2,196	74	2,228	63	2,626	68	3,799	62	2,407	137	4,992	87	4,894	79	2,890	123	3,357	81	2,114	159	2,883	104	1,838	170	4,176	196	6,609	107	3,927
Turkey	47	208	48	137	41	195	27	182	31	226	52	295	41	165	73	385	77	280	100	200	54	138	63	148	43	118	56	141	117	557	210	658
Others	122	352	87	171	57	258	114	403	86	314	101	976	45	93	106	156	187	383	135	247	131	192	182	265	93	142	205	296	134	377	172	329
World Total	874	9,435	917	10,822	888	9,839	969	13,737	1,045	18,161	827	13,552	887	15,483	927	17,831	1,062	16,360	817	7,469	562	4,107	682	4,976	596	4,288	753	8,284	1,378	25,065	1,232	18,674

(Note) 1. Data Source : IHS(Former Lloyd's Register) "Casualty Return" until 1993. "World Casualty Statistics" from 1994. Only the figures of "World Total" in this table in 1990 - 2010 were revised by latest Casualty Statistics.

There have some divergences between the accumulated world totals by country of breaking and this table's figures of "World Total" which are equivalent to Table 8 "DISPOSALS" due to above reason.

2. Ship Size Coverage : 100 Gross Tonnage and over.

Fig 9. WORLD DISPOSALS BY COUNTRY OF BREAKING



(Note) 1. Data Source : IHS (Former Lloyd's Register).
 2. Ship Size Coverage : 100 Gross Tonnage and over.

10. WORLD LAID UP VESSELS

Year	Total			Dry Cargo			Tankers		
	No.	'000 GT	'000DWT	No.	'000 GT	'000DWT	No.	'000 GT	'000DWT
1976	682	26,406	49,622	229	4,209	6,809	453	22,197	42,813
1977	561	22,022	41,427	231	4,438	7,506	330	17,584	33,921
1978	783	29,906	56,469	422	7,762	13,250	361	22,144	43,219
1979	487	9,969	17,611	359	2,960	4,389	128	7,009	13,222
1980	394	8,085	14,478	293	1,720	2,273	101	6,365	12,205
1981	425	10,411	17,631	291	1,636	2,037	134	8,775	15,594
1982	987	34,062	64,539	624	6,575	9,415	363	27,487	55,124
1983	1,707	50,295	95,951	1,265	15,260	25,648	442	35,035	70,303
1984	1,456	36,202	67,765	1,124	10,336	16,193	332	25,866	51,572
1985	1,273	34,036	65,111	950	7,600	11,705	323	26,436	53,406
1986	1,061	17,639	31,267	873	6,727	10,370	188	10,912	20,897
1987	772	12,076	20,923	621	4,684	6,823	151	7,392	14,100
1988	469	6,902	11,819	363	2,234	3,159	106	4,668	8,660
1989	313	2,788	4,156	248	1,324	1,963	65	1,464	2,193
1990	287	2,525	3,931	231	1,064	1,433	56	1,461	2,498
1991	304	2,856	4,583	258	1,451	1,970	46	1,405	2,613
1992	379	5,450	9,545	305	1,926	2,613	74	3,524	6,932
1993	413	5,673	9,586	313	2,217	2,997	100	3,456	6,589
1994	379	4,837	8,074	293	2,193	2,999	86	2,644	5,075
1995	335	4,101	6,431	269	2,120	2,916	66	1,981	3,515
1996	274	3,493	5,212	218	1,828	2,412	56	1,665	2,800
1997	297	3,792	5,609	239	1,969	2,449	58	1,823	3,160
1998	368	4,866	7,039	310	2,848	3,408	58	2,018	3,631
1999	368	4,866	7,039	329	3,374	4,345	50	1,363	2,443
2000	379	4,737	6,788	291	2,630	3,225	41	865	1,639
2001	332	3,495	4,864	236	1,837	2,173	37	644	1,196
2002	273	2,481	3,369	222	1,678	1,874	43	832	1,657
2003	274	2,080	2,733	226	1,556	1,719	48	524	1,014
2004	218	1,033	1,210	166	902	1,006	52	131	204
2005	167	740	899	133	641	754	34	99	145
2006	181	796	968	149	694	817	32	102	151
2007	184	731	786	149	603	595	35	128	191
2008	201	698	763	163	595	615	38	103	148
2009	1,414		49,316	1,323		35,841	91		13,475
2010	1,038		41,221	949		25,065	89		16,156
2011	996		39,505	918		25,483	78		14,021

Note: Lloyd's Inactive Vessels etc. As of July in each year.

Recent Inactive Vessels data

Source: LMIU Lloyd's Inactive Vessels, 7th July 2010

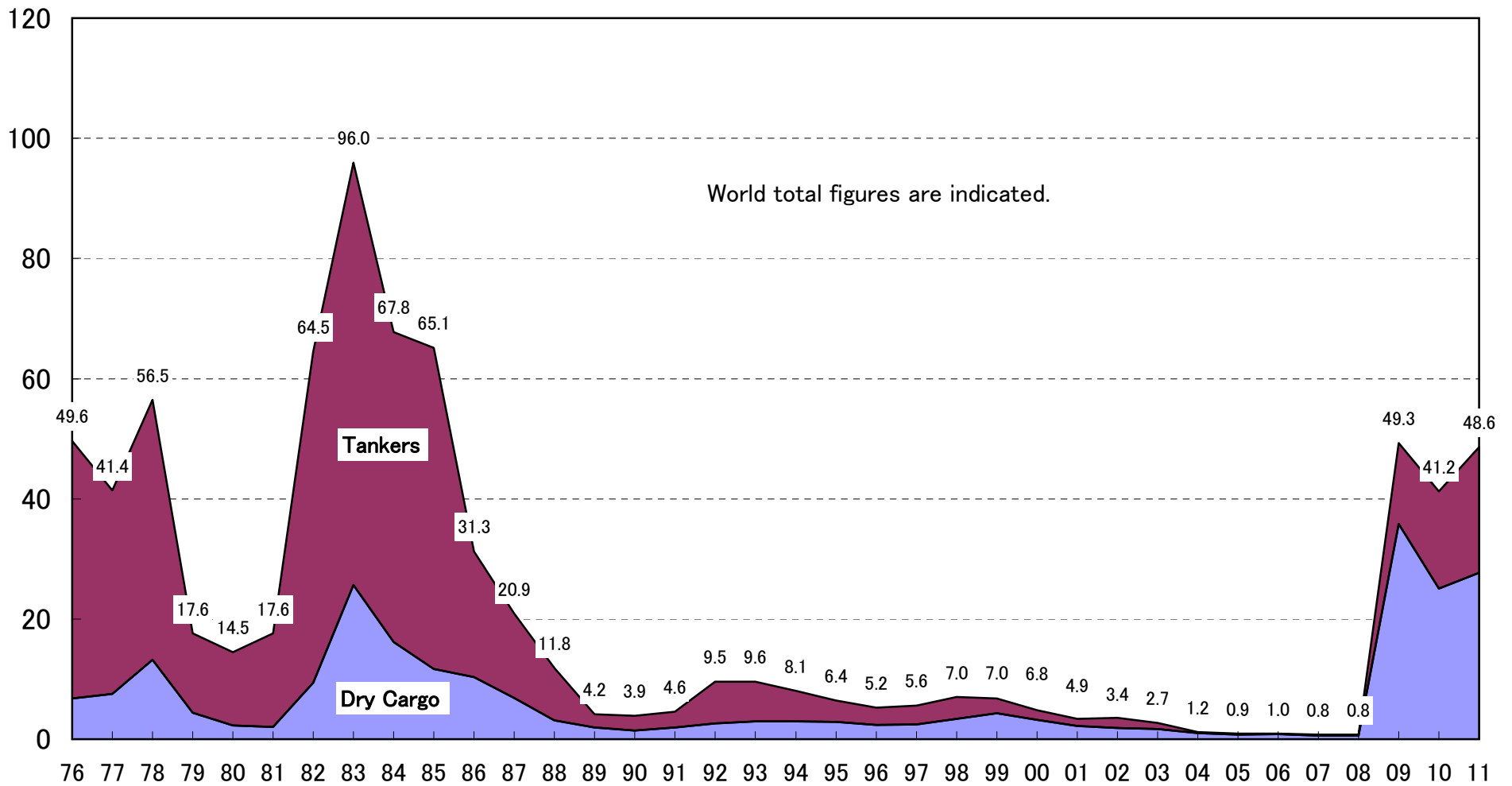
Ship-type	Inactive Fleet		Total Fleet		Inactive Percentage	
	No.	k. dwt	No.	k. dwt	No.	dwt
Bulk >9999dwt	302	13,445	7,488	490,623	4.0%	2.7%
Car carrier	69	904	762	11,354	9.1%	8.0%
Container	315	6,360	4,843	177,280	6.5%	3.6%
Crude Oil Tankers >9999dwt	89	16,156	1,799	318,525	4.9%	5.1%
LNG carrier	33	2,674	344	27,003	9.6%	9.9%
LPG carrier	121	1,088	1,216	14,943	10.0%	7.3%
Reefer >2800m3	109	594	809	5,928	13.5%	10.0%
Total	1,038	41,221	17,261	1,045,656	6.0%	3.9%

Source: LMIU Lloyd's Inactive Vessels, 6th July 2011

Ship-type	Inactive Fleet		Total Fleet		Inactive Percentage	
	No.	k. dwt	No.	k. dwt	No.	dwt
Bulk >9999dwt	426	21,272	8,309	569,252	5.1%	3.7%
Car carrier	50	628	789	12,056	6.3%	5.2%
Container	212	2,893	4,980	191,794	4.3%	1.5%
Crude Oil Tankers >9999dwt	111	20,904	1,873	332,292	5.9%	6.3%
LNG carrier	17	1,226	350	27,795	4.9%	4.4%
LPG carrier	125	902	1,243	15,096	10.1%	6.0%
Reefer >2800m3	147	805	755	5,517	19.5%	14.6%
Total	1,088	48,629	18,299	1,153,801	5.9%	4.2%

Fig 10. WORLD LAID UP VESSELS

Million DWT



(Note) 1. Data Source : Lloyd's Register "Inactive Vessels" etc.
 2. As of July in each year.

11. WORLD SEABORNE TRADE

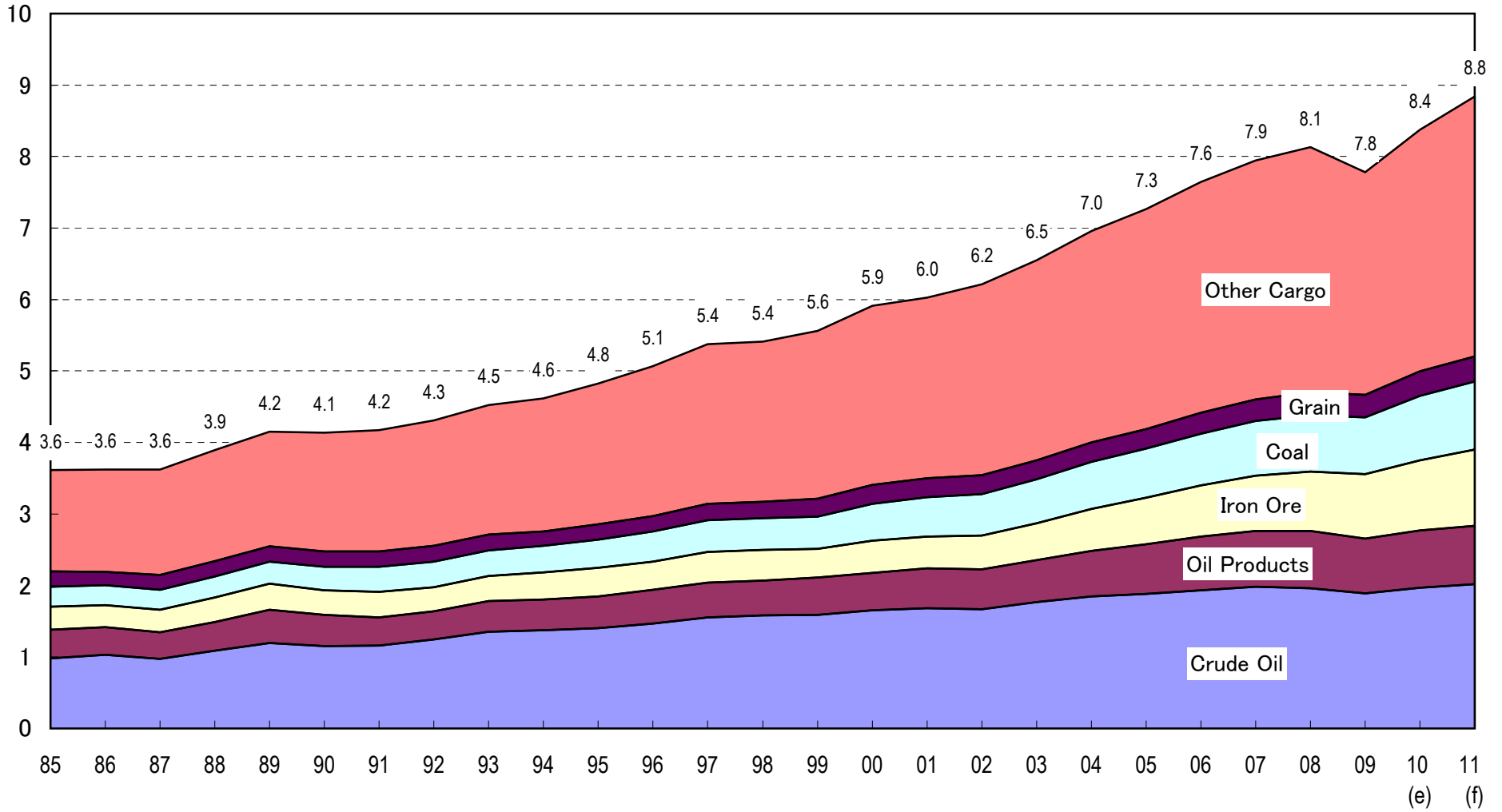
(Unit: Million Ton)

Year	Iron Ore	Coal	Grain	3 major bulk total	Other Dry	Total Dry	Crude oil	Oil Products	Total Oil	LPG	LNG	Grand Total	Growth Rate %
1984	306	236	206	748	1,320	2,068	871			21	38		
1985	321	276	213	810	1,360	2,170	984	401	1,385	22	39	3,616	
1986	311	275	187	773	1,370	2,143	1,030	387	1,417	22	39	3,622	0.2
1987	319	275	211	805	1,408	2,213	977	366	1,343	24	42	3,622	0.0
1988	341	299	216	856	1,479	2,335	1,086	402	1,488	23	46	3,892	7.5
1989	362	308	220	890	1,529	2,419	1,198	463	1,661	26	49	4,156	6.8
1990	347	329	216	892	1,574	2,466	1,155	432	1,587	28	60	4,141	-0.4
1991	358	352	217	927	1,605	2,532	1,161	390	1,551	30	59	4,172	0.7
1992	337	356	224	917	1,663	2,580	1,244	396	1,640	32	60	4,313	3.4
1993	352	357	222	931	1,716	2,647	1,354	430	1,784	34	62	4,526	4.9
1994	380	371	203	954	1,761	2,715	1,375	427	1,802	33	66	4,617	2.0
1995	402	398	213	1,013	1,868	2,881	1,400	444	1,844	34	69	4,827	4.5
1996	392	421	218	1,031	1,986	3,017	1,469	473	1,942	36	74	5,068	5.0
1997	427	448	228	1,103	2,112	3,215	1,554	487	2,041	37	83	5,376	6.1
1998	425	448	227	1,100	2,124	3,224	1,585	485	2,070	35	85	5,413	0.7
1999	401	457	245	1,103	2,221	3,324	1,592	517	2,109	37	93	5,562	2.8
2000	447	516	262	1,225	2,364	3,589	1,656	523	2,179	39	103	5,910	6.3
2001	450	550	260	1,260	2,388	3,648	1,684	553	2,237	36	107	6,027	2.0
2002	479	573	269	1,321	2,521	3,842	1,667	556	2,223	36	113	6,214	3.1
2003	515	617	265	1,397	2,634	4,031	1,770	586	2,356	36	125	6,548	5.4
2004	584	660	273	1,517	2,788	4,305	1,850	636	2,486	38	132	6,960	6.3
2005	653	684	273	1,610	2,897	4,507	1,885	691	2,576	38	142	7,264	4.4
2006	713	724	290	1,727	3,028	4,755	1,933	754	2,687	40	160	7,640	5.2
2007	774	765	302	1,841	3,132	4,973	1,984	780	2,764	39	171	7,947	4.0
2008	833	787	322	1,942	3,218	5,160	1,964	796	2,760	42	173	8,135	2.4
2009	902	790	317	2,009	2,891	4,900	1,892	767	2,659	38	183	7,780	-4.4
2010 (e)	987	900	343	2,230	3,145	5,375	1,969	798	2,767	39	192	8,373	7.6
2011 (f)	1,060	954	355	2,369	3,397	5,766	2,016	822	2,838	40	194	8,839	5.6

(Note) Source : Clarkson "Shipping Review & Outlook – Spring 2011".

Fig 11. WORLD SEABORNE TRADE

Billion Ton



(Note) Source : Clarkson "Shipping Review and Outlook".

12. NEWBUILDING/REPAIR SALES (SAJ Members Only)

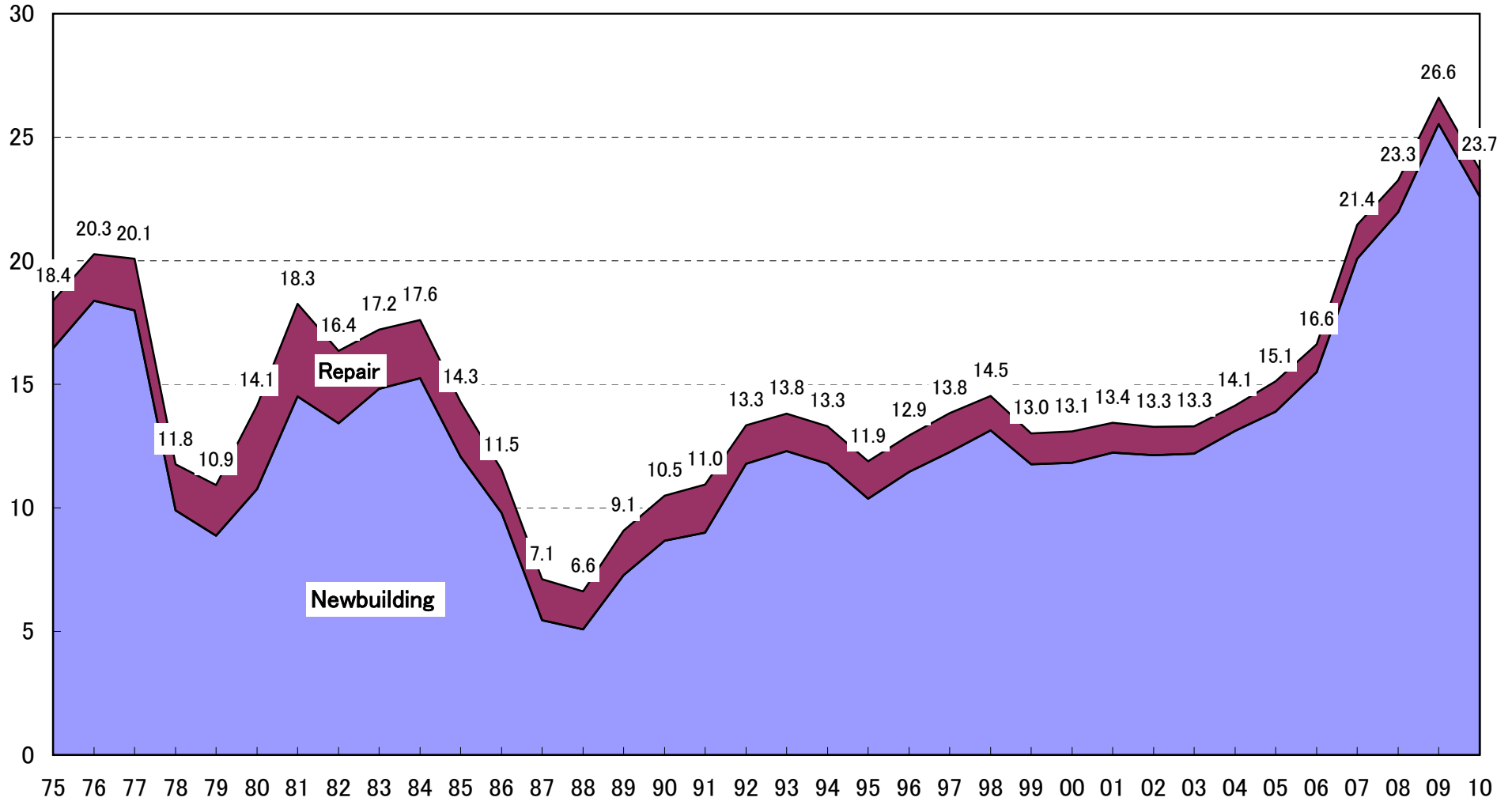
(Unit : 100 Million Yen)

Fiscal year	Newbuilding	share (%)	Repair	share (%)	Total	No. of company
1975	16,453	89.5	1,920	10.5	18,373	23
1976	18,374	90.7	1,890	9.3	20,264	23
1977	17,989	89.5	2,103	10.5	20,092	23
1978	9,906	84.2	1,856	15.8	11,762	23
1979	8,877	81.2	2,052	18.8	10,929	23
1980	10,750	76.0	3,395	24.0	14,145	23
1981	14,514	79.5	3,740	20.5	18,254	23
1982	13,412	82.0	2,941	18.0	16,353	23
1983	14,820	86.1	2,385	13.9	17,205	23
1984	15,249	86.7	2,347	13.3	17,596	23
1985	12,067	84.5	2,206	15.5	14,273	23
1986	9,800	84.9	1,737	15.1	11,537	18
1987	5,448	76.7	1,658	23.3	7,106	18
1988	5,086	76.7	1,542	23.3	6,628	18
1989	7,279	80.2	1,796	19.8	9,075	18
1990	8,665	82.7	1,817	17.3	10,482	18
1991	8,990	82.1	1,961	17.9	10,951	18
1992	11,780	88.3	1,567	11.7	13,347	18

Fiscal year	Newbuilding	share (%)	Repair	share (%)	Total	No. of company
1993	12,288	88.9	1,529	11.1	13,817	18
1994	11,789	88.6	1,518	11.4	13,307	18
1995	10,378	87.3	1,515	12.7	11,893	18
1996	11,453	88.6	1,480	11.4	12,933	18
1997	12,247	88.6	1,577	11.4	13,824	18
1998	13,141	90.4	1,397	9.6	14,538	18
1999	11,768	90.4	1,249	9.6	13,017	18
2000	11,820	90.3	1,276	9.7	13,096	18
2001	12,240	91.1	1,201	8.9	13,441	18
2002	12,128	91.3	1,157	8.7	13,285	18
2003	12,202	91.8	1,094	8.2	13,296	21
2004	13,122	92.8	1,024	7.2	14,146	19
2005	13,891	91.9	1,227	8.1	15,118	19
2006	15,485	93.1	1,140	6.9	16,625	20
2007	20,072	93.6	1,378	6.4	21,449	20
2008	21,974	94.5	1,289	5.5	23,264	20
2009	25,529	95.9	1,079	4.1	26,608	20
2010	22,604	95.4	1,090	4.6	23,695	19

Fig 12. NEWBUILDING/REPAIR SALES (SAJ Members Only)

100 Billion Yen



13. ORDINARY STEEL CONSUMPTION BY SHIPBUILDING INDUSTRY

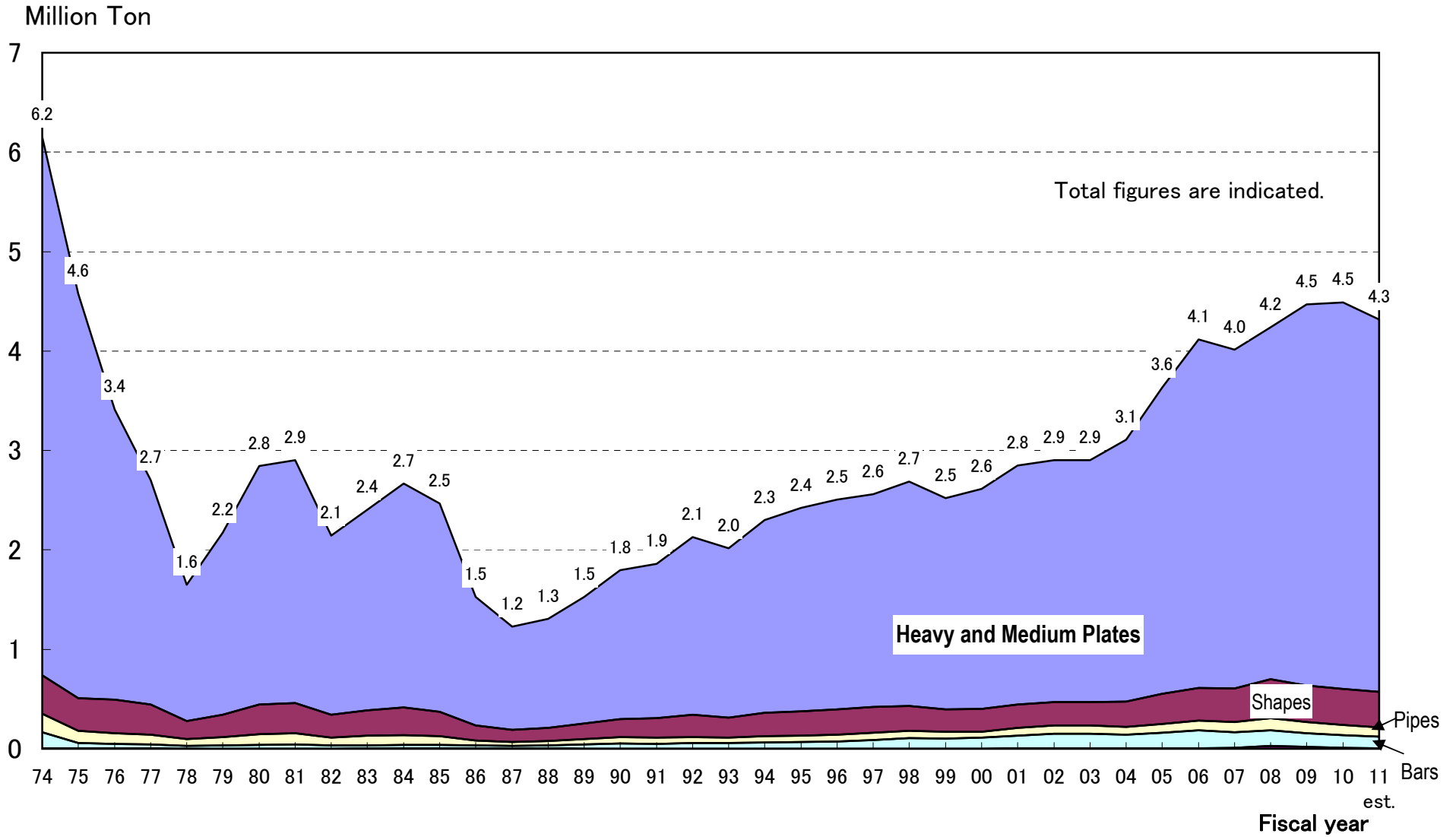
(Unit : Ton)

Year Steel type	74	75	76	77	78	79	80	81	82	83	84	85	86	87	88	89	90	91	92
Plates	5,416,302	4,068,621	2,916,624	2,254,240	1,372,564	1,828,327	2,397,987	2,444,153	1,801,536	2,017,055	2,255,608	2,094,004	1,293,794	1,039,215	1,098,946	1,271,433	1,494,663	1,552,328	1,785,552
Shapes	384,859	329,191	339,550	302,052	177,810	227,958	298,407	301,588	228,451	256,014	275,769	243,796	150,972	119,794	133,888	155,351	184,962	195,517	223,333
Pipes	185,487	122,682	108,295	99,972	71,880	84,045	107,572	113,963	79,099	94,844	101,547	88,345	51,648	40,806	42,703	54,623	62,620	62,958	61,653
Bars	164,050	53,708	43,211	40,086	24,864	30,254	37,313	42,479	33,225	32,857	34,007	36,539	30,484	25,467	30,649	42,783	50,948	48,860	55,507
Others	3,722	3,375	5,564	4,276	2,329	2,332	1,916	1,650	1,525	2,793	2,783	2,833	2,493	2,422	2,787	2,322	2,120	1,648	2,090
Total	6,154,420	4,577,577	3,413,244	2,700,626	1,649,447	2,172,916	2,843,195	2,903,833	2,143,836	2,403,563	2,669,714	2,465,517	1,529,391	1,227,704	1,308,973	1,526,512	1,795,313	1,861,311	2,128,135

Year Steel type	93	94	95	96	97	98	99	00	01	02	03	04	05	06	07	08	09	10	11 (estimation)
Plates	1,700,449	1,938,704	2,045,016	2,110,196	2,139,071	2,256,065	2,122,552	2,212,440	2,405,927	2,433,287	2,631,493	3,080,297	3,506,815	3,405,778	3,541,567	3,896,154	3,832,844	3,889,481	3,744,680
Shapes	203,587	238,572	247,857	254,153	260,732	251,859	226,351	226,704	232,807	231,137	255,759	299,493	326,354	339,370	392,009	439,446	367,128	361,087	354,964
Pipes	52,533	59,169	63,716	67,543	73,144	73,594	66,883	62,438	76,786	85,842	78,853	89,420	98,606	104,144	123,032	119,301	113,188	101,462	90,910
Bars	57,142	63,728	64,237	72,428	84,429	106,160	102,238	108,458	130,070	148,581	139,794	158,874	182,227	158,556	154,897	144,729	136,022	127,160	117,890
Others	1,497	2,038	2,200	1,621	1,562	1,137	1,446	1,980	4,079	2,462	2,679	3,569	4,387	7,352	29,433	27,959	19,086	10,308	6,618
Total	2,015,208	2,302,211	2,423,026	2,505,941	2,558,938	2,688,815	2,519,470	2,612,020	2,849,669	2,901,309	3,108,578	3,631,653	4,118,389	4,015,200	4,240,938	4,627,589	4,468,268	4,489,498	4,315,062

- (Note) 1. Data Source : SAJ members only. Uses are limited to shipbuilding and offshore structures.
 2. Fiscal Year Basis : from 1st April to 31st March.
 3. From 2006, Purchasing basis.

Fig 13. ORDINARY STEEL CONSUMPTION BY SHIPBUILDING INDUSTRY



(Note) 1. Data Source : SAJ members only. Uses are limited to shipbuilding and offshore structures.
 2. From 2006, purchasing basis.

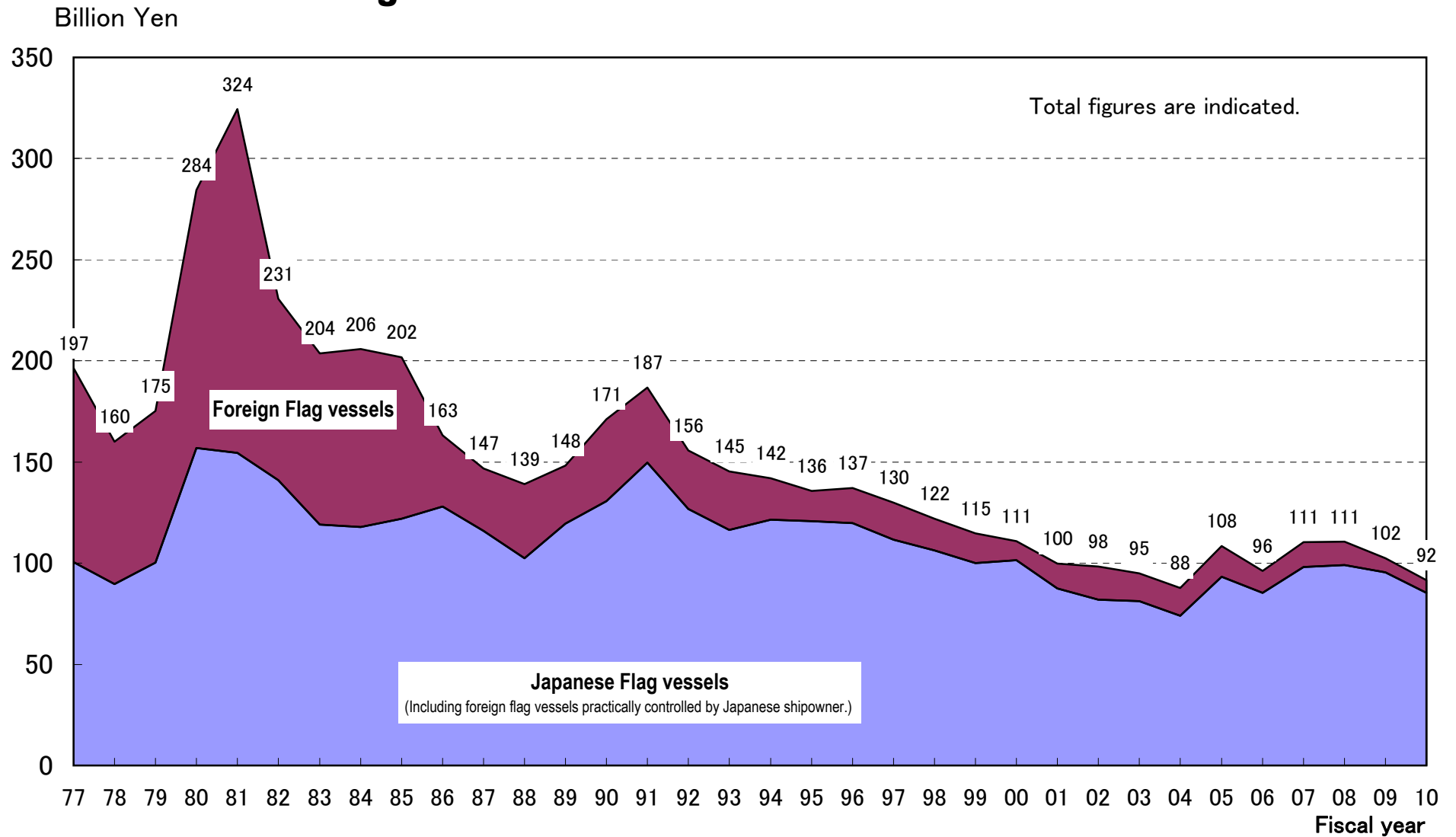
14. REPAIR / CONVERSION TURNOVER

Flag	Types of work	77		78		79		80		81		82		83		84		85		86		87		88		89		90		91		92		93	
		No.	Turnover ¥100 Mill	No.	Turnover ¥100 Mill	No.	Turnover ¥100 Mill	No.	Turnover ¥100 Mill	No.	Turnover ¥100 Mill	No.	Turnover ¥100 Mill	No.	Turnover ¥100 Mill	No.	Turnover ¥100 Mill	No.	Turnover ¥100 Mill	No.	Turnover ¥100 Mill	No.	Turnover ¥100 Mill	No.	Turnover ¥100 Mill	No.	Turnover ¥100 Mill	No.	Turnover ¥100 Mill	No.	Turnover ¥100 Mill	No.	Turnover ¥100 Mill		
	Docking work	2,951	770	2,876	725	2,689	837	2,659	1,111	2,632	1,174	2,844	1,124	2,769	1,054	2,588	936	2,722	985	2,629	1,013	2,488	959	851	2,279	987	2,007	1,166	2,090	1,295	1,989	1,077	1,928	1,021	
	Damaged repair	358	70	425	36	285	30	160	47	127	107	159	38	141	42	132	22	143	40	158	35	174	48	135	44	111	37	135	71	147	112	110	70	84	20
	Conversion	40	112	50	93	36	95	49	372	38	242	33	224	34	73	26	154	36	157	46	183	49	100	35	68	25	113	13	18	8	16	25	48	29	47
	Running/Afloat repair	614	54	546	42	537	40	522	38	482	22	562	25	509	21	630	66	836	38	963	50	1,195	54	952	61	859	58	792	51	850	73	785	74	751	77
	Japanese Flag vessels Total	3,963	1,005	3,897	896	3,547	1,003	3,390	1,569	3,279	1,545	3,598	1,410	3,453	1,190	3,376	1,178	3,737	1,220	3,796	1,281	3,906	1,160	3,419	1,024	3,274	1,195	2,947	1,307	3,095	1,496	2,909	1,269	2,792	1,164
	Docking work	949	426	890	319	893	372	904	544	925	739	745	488	733	397	679	335	621	318	454	237	397	180	424	210	420	231	339	255	401	298	316	237	263	192
	Damaged repair	72	33	52	61	87	93	52	50	44	109	72	90	42	48	74	61	41	36	20	43	28	44	18	28	20	42	34	47	48	42	28	38	22	
	Conversion	55	442	47	277	41	231	49	606	48	798	20	275	20	353	35	409	35	392	5	54	16	79	11	106	4	17	7	73	0	0	2	3	5	52
	Running/Afloat repair	679	59	565	47	552	53	449	75	508	53	452	42	475	50	397	64	385	47	281	40	219	21	228	34	128	20	123	44	130	27	128	20	137	25
	Foreign Flag vessels Total	1,755	960	1,554	704	1,573	749	1,454	1,275	1,525	1,699	1,289	895	1,270	848	1,185	881	1,102	798	776	351	675	308	707	368	580	289	511	406	578	373	488	287	443	290
	Docking work	3,900	1,196	3,766	1,045	3,582	1,209	3,563	1,655	3,557	1,913	3,589	1,612	3,502	1,450	3,267	1,271	3,343	1,303	3,083	1,250	2,885	1,139	2,721	1,061	2,699	1,218	2,346	1,422	2,491	1,594	2,305	1,314	2,191	1,212
	Damaged repair	430	103	477	97	372	123	212	98	171	216	231	128	183	90	206	96	204	82	194	55	217	76	179	62	139	58	177	105	194	160	152	98	122	41
	Conversion	95	554	97	370	77	327	98	978	86	1,040	53	499	54	425	61	563	71	549	51	238	65	179	46	174	29	130	20	91	8	16	27	50	34	99
	Running/Afloat repair	1,293	112	1,111	89	1,089	94	971	113	990	75	1,014	67	984	72	1,027	130	1,221	85	1,244	90	1,414	75	1,180	95	987	79	915	95	980	100	913	94	888	102
	Grand Total	5,718	1,965	5,451	1,601	5,120	1,752	4,844	2,843	4,804	3,244	4,887	2,306	4,723	2,038	4,561	2,059	4,839	2,018	4,572	1,632	4,581	1,468	4,126	1,391	3,854	1,484	3,458	1,713	3,673	1,869	3,397	1,556	3,235	1,454
	No. of surveyed company	22		1Half 22, 2Half 21		1Half 21, 2Half 18		21		1Half 21, 2Half 23		23		23		23		23		23		21		17		17		17		1Half 18, 2Half 19		19		19	

Flag	Types of work	94		95		96		97		98		99		00		01		02		03		04		05		06		07		08		09		10	
		No.	Turnover ¥100 Mill	No.	Turnover ¥100 Mill	No.	Turnover ¥100 Mill	No.	Turnover ¥100 Mill	No.	Turnover ¥100 Mill	No.	Turnover ¥100 Mill	No.	Turnover ¥100 Mill	No.	Turnover ¥100 Mill	No.	Turnover ¥100 Mill	No.	Turnover ¥100 Mill	No.	Turnover ¥100 Mill	No.	Turnover ¥100 Mill	No.	Turnover ¥100 Mill	No.	Turnover ¥100 Mill	No.	Turnover ¥100 Mill	No.	Turnover ¥100 Mill		
	Docking work	1,971	1,121	1,970	1,107	1,908	1,082	1,737	1,003	1,582	950	1,404	897	1,142	931	1,194	813	1,093	748	1,041	753	1,111	692	1,084	837	946	751	1,006	911	997	912	868	859	933	795
	Damaged repair	75	28	60	24	80	37	63	21	53	20	47	24	37	13	31	10	31	12	7	1	26	12	23	13	23	20	13	2	9	3	20	4	19	4
	Conversion	13	10	12	17	17	24	21	48	23	34	14	12	17	25	11	22	17	28	8	19	11	8	10	31	9	20	7	21	12	26	5	58	5	16
	Running/Afloat repair	740	57	758	60	643	56	575	43	441	59	406	68	309	45	294	31	231	31	217	39	237	29	392	52	366	63	341	46	240	49	203	33	225	39
	Japanese Flag vessels Total	2,799	1,215	2,800	1,207	2,648	1,199	2,396	1,115	2,099	1,064	1,871	1,001	1,505	1,014	1,530	876	1,372	820	1,273	811	1,385	741	1,509	933	1,344	854	1,367	981	1,258	990	1,096	954	1,182	854
	Docking work	262	149	166	106	161	119	192	155	115	121	131	114	85	79	78	104	95	142	107	121	142	118	128	128	104	81	135	109	93	101	77	61	75	53
	Damaged repair	23	13	28	12	25	10	17	4	5	3	7	5	5	4	12	5	6	1	4	2	6	2	4	0	6	1	0	7	8	2	0	1	1	
	Conversion	3	13	2	5	6	22	3	17	3	18	3	15	0	0	1	2	3	5	1	3	2	4	1	4	2	2	5	0	0	0	0	0	0	
	Running/Afloat repair	138	30	81	28	67	20	55	9	53	13	30	12	36	12	39	10	49	16	18	12	67	12	43	19	31	8	23	11	17	7	19	8	24	8
	Foreign Flag vessels Total	426	205	277	151	259	172	267	184	176	155	171	146	126	95	130	121	153	164	130	139	217	136	176	151	143	108	161	124	117	116	98	69	100	62
	Docking work	2,233	1,270	2,136	1,213	2,069	1,201	1,929	1,158	1,697	1,071	1,535	1,011	1,227	1,010	1,272	917	1,188	890	1,148	874	1,253	809	1,212	965	1,050	832	1,141	1,020	1,090	1,013	945	921	1,008	848
	Damaged repair	98	41	88	36	105	47	80	26	58	23	54	29	42	17	43	15	37	13	11	3	32	14	27	14	29	37	14	2	16	11	22	5	20	5
	Conversion	16	23	14	22	23	47	24	65	26	52	17	25	12	24	20	33	9	22	13	13	11	34	11	22	9	26	12	26	5	58	5	16		
	Running/Afloat repair	878	86	839	88	710	76	630	52	494	72	436	80	345	57	333	41	280	47	235	51	304	41	435	71	397	71	364	57	257	56	222	40	249	47
	Grand Total	3,225	1,420	3,077	1,358	2,907	1,371	2,663	1,300	2,275	1,219	2,042	1,147	1,631	1,109	1,660	997	1,525	983	1,403	950	1,602	876	1,685	1,084	1,487	962	1,528	1,105	1,375	1,105	1,194	1,023	1,282	916
	No. of surveyed company	19		19		19		18		18		17		17		16		1Half 16, 2Half 14		14		14		1Half 15, 2Half 14		14		14		14		14		14	

- (Note) 1. Data Source : SAJ members and associate member only. Fiscal year basis.
2. Docking work is mainly composed of Special survey and Intermediate survey.
3. The definition of "Japanese Flag vessels" in this table includes foreign flag vessels which are practically controlled by Japanese shipowner.

Fig 14. REPAIR / CONVERSION TURNOVER



(Note) Data Source : SAJ members and associate member only.

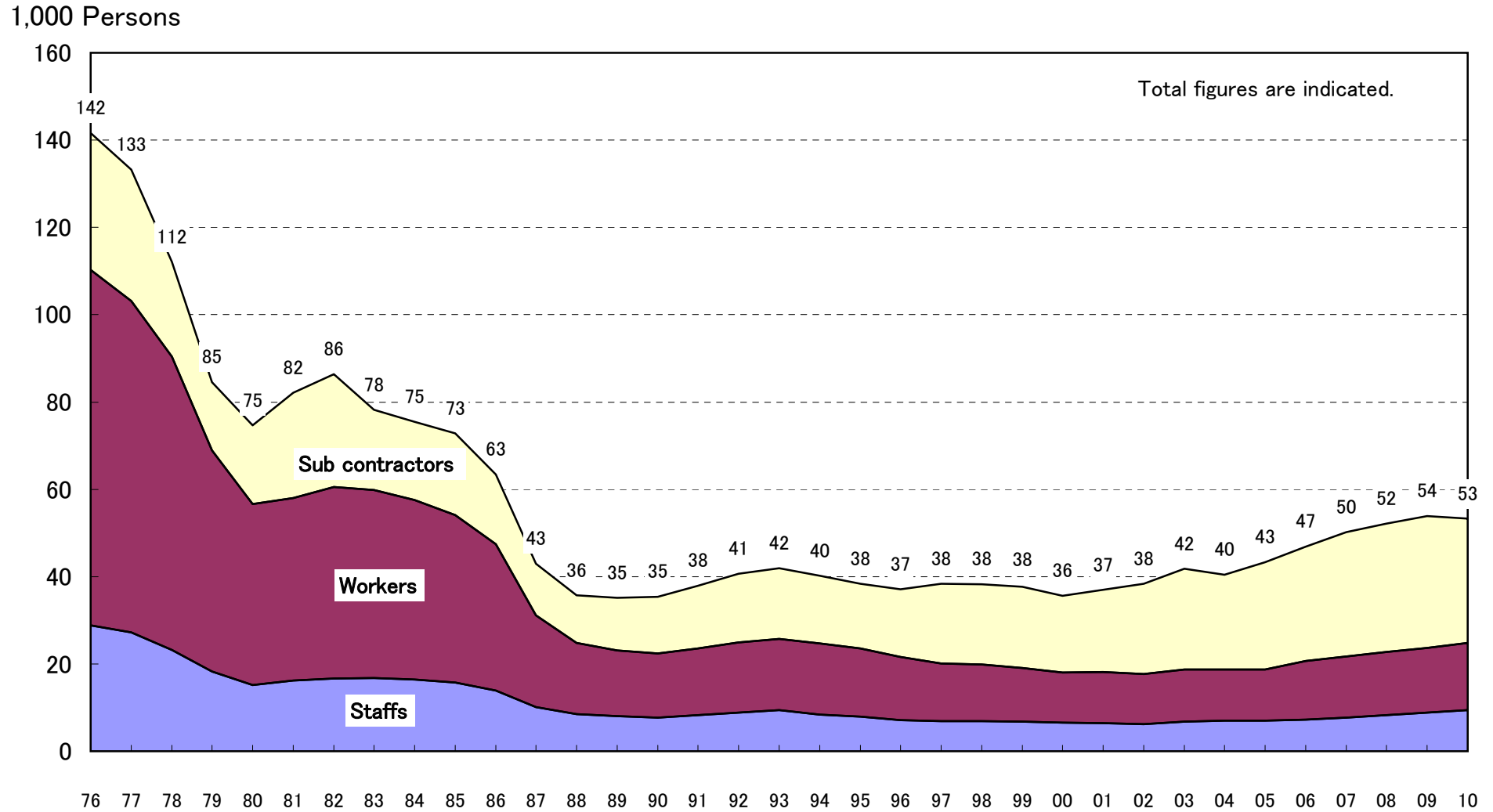
15. SHIPBUILDING WORKFORCE (SAJ Members)

(Unit : Person)

Year	Division	Shipbuilding Division Employee			No. of surveyed Companies & Yards	Total Employee (Inc. other division)	Subcontractor (shipbuilding division)	Employee + Subcon. Total
		Total	Staff	Worker				
1976		110,235	28,869	81,366	23 co. & 51 yards	–	31,340	141,575
77		103,153	27,235	75,918	23 co. & 51 yards	264,309	30,053	133,206
78		90,409	23,163	67,246	23 co. & 49 yards	246,386	21,661	112,070
79		68,922	18,309	50,613	23 co. & 48 yards	214,110	15,664	84,586
80		56,638	15,155	41,483	23 co. & 46 yards	201,196	18,050	74,688
81		58,037	16,244	41,793	23 co. & 46 yards	204,583	24,135	82,172
82		60,482	16,637	43,845	23 co. & 46 yards	204,390	25,908	86,390
83		59,803	16,770	43,033	23 co. & 45 yards	203,150	18,422	78,225
84		57,504	16,418	41,086	23 co. & 44 yards	195,468	17,992	75,496
85		54,065	15,692	38,373	23 co. & 43 yards	189,053	18,699	72,764
86		47,380	13,865	33,515	23 co. & 44 yards	176,167	16,034	63,414
87		31,134	10,140	20,994	21 co. & 40 yards	146,393	11,866	43,000
88		24,844	8,533	16,311	18 co. & 40 yards	132,559	10,846	35,690
89		23,096	8,049	15,047	18 co. & 39 yards	128,106	12,006	35,102
90		22,351	7,639	14,712	18 co. & 38 yards	127,299	13,056	35,407
91		23,516	8,305	15,211	18 co. & 38 yards	130,007	14,412	37,928
92		24,946	8,873	16,073	18 co. & 38 yards	133,881	15,664	40,610
93		25,677	9,366	16,311	18 co. & 38 yards	134,338	16,266	41,943
94		24,714	8,397	16,317	18 co. & 38 yards	129,849	15,514	40,228
95		23,564	7,886	15,678	18 co. & 38 yards	124,362	14,752	38,316
96		21,623	7,066	14,557	18 co. & 37 yards	117,324	15,480	37,103
97		20,121	6,925	13,196	18 co. & 37 yards	113,107	18,215	38,336
98		19,927	6,872	13,055	18 co. & 36 yards	111,351	18,298	38,225
99		19,022	6,753	12,269	18 co. & 35 yards	107,249	18,622	37,644
00		18,088	6,570	11,518	18 co. & 33 yards	100,785	17,479	35,567
01		18,151	6,441	11,710	18 co. & 35 yards	94,108	18,865	37,016
02		17,656	6,245	11,411	18 co. & 34 yards	89,112	20,755	38,411
03		18,762	6,771	11,991	17 co. & 33 yards	78,433	23,048	41,810
04		18,667	6,975	11,692	17 co. & 32 yards	78,433	21,771	40,438
05		18,727	7,051	11,676	17 co. & 32 yards	71,596	24,608	43,335
06		20,646	7,269	13,377	18 co. & 35 yards	72,994	26,188	46,834
07		21,663	7,702	13,961	18 co. & 35 yards	71,542	28,577	50,240
08		22,748	8,295	14,453	18 co. & 35 yards	76,929	29,391	52,139
09		23,635	8,840	14,795	18 co. & 35 yards	79,982	30,261	53,896
10		24,859	9,408	15,451	18 co. & 35 yards	79,907	28,461	53,320

(Note) As of 1st April in each year.

Fig 15. SHIPBUILDING WORKFORCE (SAJ Members)



(Note) As of 1st April in each year.

Annex 3. Actual Delivery & Estimated Delivery by Ship-types (based on present orderbook)

As of end Jun. 2011, Unit: Mill. GT

		2004	2005	2006	2007	2008	2009	2010	Estimation by Clarkson taking account of delivery delay etc.			
									2011 est.	2012 est.	2013 est.	2014 est.
VLCC	>= 200,000	4.6	4.8	3.0	4.6	6.4	8.6	8.8	10.0	8.6	6.5	4.2
Suezmax	120-200,000	2.2	2.1	2.2	2.1	1.1	3.8	3.3	3.1	3.8	2.8	1.2
Aframax	80-120,000	3.1	3.9	3.0	3.3	4.1	5.8	4.1	3.2	2.8	1.1	0.7
Panamax	60-80,000	1.5	1.8	1.8	1.8	1.8	1.6	1.3	1.4	0.9	0.8	0.6
Products	30-60,000	2.8	2.0	2.3	2.6	3.7	3.9	2.5	1.9	1.6	1.0	0.8
Products	10-30,000	0.1	0.1	0.1	0.1	0.1	0.1	0.1	0.1	0.1	0.0	0.0
Chem & Spec.	10-60,000	1.3	1.9	2.2	2.5	3.1	2.8	2.4	2.2	1.5	0.6	0.6
Small tankers	< 10,000	0.3	0.3	0.3	0.4	0.7	0.7	0.5	0.5	0.3	0.1	0.1
Total Tankers		15.9	16.9	14.9	17.4	21.0	27.3	23.0	22.4	19.6	12.9	8.2
Capesize	> 100,000	3.8	4.4	5.6	5.2	4.4	10.8	20.0	20.3	15.3	11.4	7.9
Panamax	80-100,000	0.3	0.8	2.1	1.8	1.4	2.2	6.1	7.6	9.8	5.9	2.2
Panamax	60-80,000	3.1	3.0	2.5	1.8	2.1	1.5	2.4	4.0	3.9	2.9	1.1
Handymax	40-60,000	2.4	3.2	2.9	3.3	3.8	5.9	10.1	8.7	9.5	6.3	2.6
Handysize	10-40,000	1.2	1.2	0.9	1.4	1.8	3.1	5.3	5.8	5.1	2.1	0.9
Combos	> 10,000	0.0	0.0	0.0	0.0	0.0	0.0	0.9	0.6	0.1	0.0	0.0
Total Bulkers and Combos		10.8	12.6	14.0	13.5	13.5	23.5	44.8	47.0	43.7	28.6	14.7
Containers	> 8,000 teu	1.4	3.0	6.2	4.0	5.1	4.0	7.5	8.4	8.2	11.1	9.9
Containers	3-8,000 teu	4.3	4.9	5.4	6.8	6.8	5.9	6.0	3.7	4.0	3.6	1.8
Containers	< 3,000 teu	1.4	2.3	3.3	3.5	4.1	2.0	1.4	1.1	0.7	0.8	0.2
Total Containers		7.1	10.2	14.9	14.3	16.0	11.9	14.9	13.2	12.9	15.5	11.9
LNG Carriers		2.0	1.8	2.9	3.2	6.0	4.8	2.9	0.5	0.6	1.5	1.9
LPG Carriers		0.3	0.3	0.6	0.9	1.8	1.1	0.9	0.5	0.5	0.4	0.1
Offshore		0.2	0.4	0.5	0.7	0.9	1.3	1.5	1.0	1.3	0.6	0.3
Cruise Vessels		0.9	0.4	0.7	0.9	1.0	1.0	1.2	0.6	0.8	0.4	0.5
Ro-Ro Ferries		0.4	0.4	0.3	0.3	0.5	0.4	0.3	0.3	0.3	0.2	0.2
Others #		3.1	3.9	4.5	5.4	6.0	5.9	7.0	7.0	5.1	3.4	2.7
Total Special Vessels		4.6	5.1	6.0	7.3	8.4	8.6	10.0	8.9	7.5	4.6	3.7
All Vessels Types		40.7	46.9	53.3	56.6	66.7	77.2	96.5	92.5	84.8	63.5	40.5

Note: 1. Source : Clarkson "World Shipyard Monitor, page7-Jul. 2011".

2. Others# includes FPSO, MPP, Reefers, RoRo ships, PCC.

3. Estimated delivery figures are updated by monthly incorporating new orders and other informations.

4. Right figures are statistical orderbook not taking account of delivery delay etc. Source : Clarkson "WSM, page17-Jul. 2011".

Orderbook (No adjustment)

134.8	106.5	57.4	19.1
-------	-------	------	------

Annex 3. Actual Delivery & Estimated Delivery by Ship-types (based on present orderbook)

